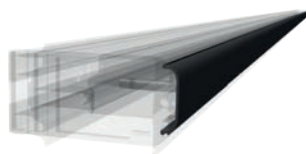


SL ENERGY WALL



**SL Rack**

Schletter Ludwig



Visit our  
website:  
[www.sl-rack.com](http://www.sl-rack.com)

Find us on



**GERMAN INNOVATION**

## Innovative Product Development



„Our racking systems have been developed since 1996 and are continuously optimized. Pre-assembled components that are quick and easy to install, prompt order processing, a reliable product supply and cost-effectiveness are our focus.

All our components follow a convenient top-down installation approach, ensuring a smooth and timesaving workflow. SL Rack systems are installer-friendly, intuitive and standardized, while still having the flexibility to adapt to each respective project site.“

Sincerely,

*Ludwig Schletter*

## SL Rack in numbers:



**26**..... Years of experience

**30**..... GW installed worldwide

**15**..... Product specialists are happy to support you!

**EU**..... Almost exclusively manufactured in Germany and Europe

**100%** ... Stainless steel and aluminum- **extremly durable**



Visit our  
website:  
[www.sl-rack.com](http://www.sl-rack.com)



Check out our  
YouTube-channel:  
[Installation videos »](#)

\*Our warranty conditions apply. They are available at [www.sl-rack.com](http://www.sl-rack.com)

## Advantages of SL Energy Wall

- » Quick and easy installation
  - => Pre-assembled
  - => Only one tool: Torx 40
- » Installation according to module manufacturer's specifications
- » Module frames 28-50 mm
- » Integrated grounding
- » Water drainage included
- » No rattling noise
- » Sleek look
  - => Low system height
  - => Profile adapts to the height of the module



## Facade System Bottom, Mid and Top

- » Completely pre-assembled
- » Available in 1790 mm for individual module installation in landscape (module length up to 1790 mm) as well as 4575 mm for four panels in portrait (module width 1134 mm)
- » Material: Aluminum (profile), stainless steel (hardware)



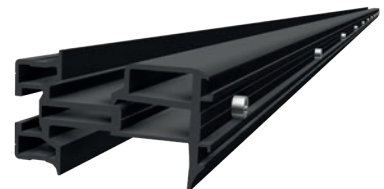
### FACADE SYSTEM BOTTOM

<b>Item no. 36121-1790</b>	EAN 4262355112968	Facade System Bottom - 1790 mm, black anodized	40 Pcs. per PU
<b>Item no. 36121-4575</b>	EAN 4262355112760	Facade System Bottom - 4575 mm, black anodized	40 Pcs. per PU



### FACADE SYSTEM MID

<b>Item no. 36122-1790</b>	EAN 4262355112951	Facade System Mid - 1790 mm, black anodized	40 Pcs. per PU
<b>Item no. 36122-4575</b>	EAN 4262355112784	Facade System Mid - 4575 mm, black anodized	40 Pcs. per PU

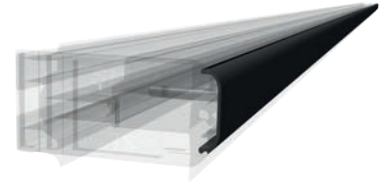


### FACADE SYSTEM TOP

<b>Item no. 36123-1790</b>	EAN 4262355112944	Facade System Top - 1790 mm, black anodized	40 Pcs. per PU
<b>Item no. 36123-4575</b>	EAN 4262355112807	Facade System Top - 4575 mm, black anodized	40 Pcs. per PU

## Facade System Cover

- » Conceals the bolts of the profile
- » Easy click-mount
- » Provides an overall aesthetic appeal
- » Material: Aluminum



### VARIANTS

Item no. 36105-1790	EAN 4262355112975	Facade System Cover - 1790 mm, black anodized	120 Pcs. per PU
Item no. 36105-4575	EAN 4262355112746	Facade System Cover - 4575 mm, black anodized	120 Pcs. per PU

## Facade System End Cap

- » For a clean finish at the ends of the profiles
- » Integrated height adjustment
- » Kit consists of 2 plastic end caps
- » Provides an overall aesthetic appeal
- » Material: Plastic



Item no. 31106-00	EAN 4262355112722	Facade System End Cap, black	200 Pcs. per PU
-------------------	-------------------	------------------------------	-----------------

## Facade Fastener

- » For attaching the facade system to the wall
- » Installation in combination with hanger bolt
- » Can be mounted upwards and downwards
- » Profile alignment down to the millimeter
- » Ensures rear ventilation of 6 cm
- » Disappears behind the modules
- » Material: Aluminium (fastener), stainless steel (hardware)



Item no. 31107-00	EAN 4262355112920	Facade Fastener	80 Pcs. per PU
-------------------	-------------------	-----------------	----------------

## External Connector for all RAILS (excl. RAIL 120)

- » Easy and fast connection of profiles
- » Convenient installation from the top
- » Only one tool required: Torx 40
- » Compatible with other profiles on the market
- » Universally applicable for all RAILS (excl. RAIL 120) with the same static values as a continuous rail
- » Due to a height of just 20 mm, the External Connector RAIL 3.0 is ideal for flat structures
- » Also available in black anodized



### VARIANTS

<b>Item no. 81110-00</b>	EAN 4262355112906	External Connector RAIL 3.0	40 pcs. per PU
<b>Item no. 86110-00</b>	EAN 4262355112913	External Connector RAIL 3.0, black anodized	40 pcs. per PU

## Hanger Bolt Adaptor 2.0

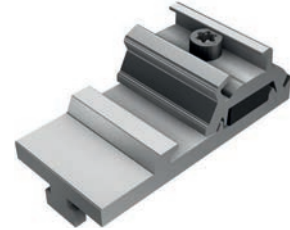
- » Universal mounting of any SL Rack RAIL and rails of direct competitors with a bottom groove of 10,5 mm
- » Upper and lower mounting attachments with ribbed profile for high fitting accuracy and stability
- » Suitable for hanger bolts M10 and M12



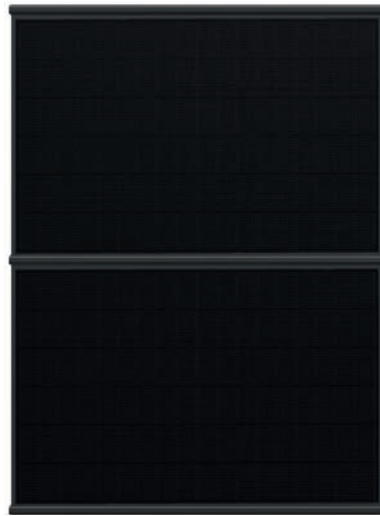
<b>Item no. 11302-12</b>	EAN 4262355112586	Hanger Bolt Adaptor 2.0 M12	100 pcs. per PU
--------------------------	-------------------	-----------------------------	-----------------

## Cross Connector

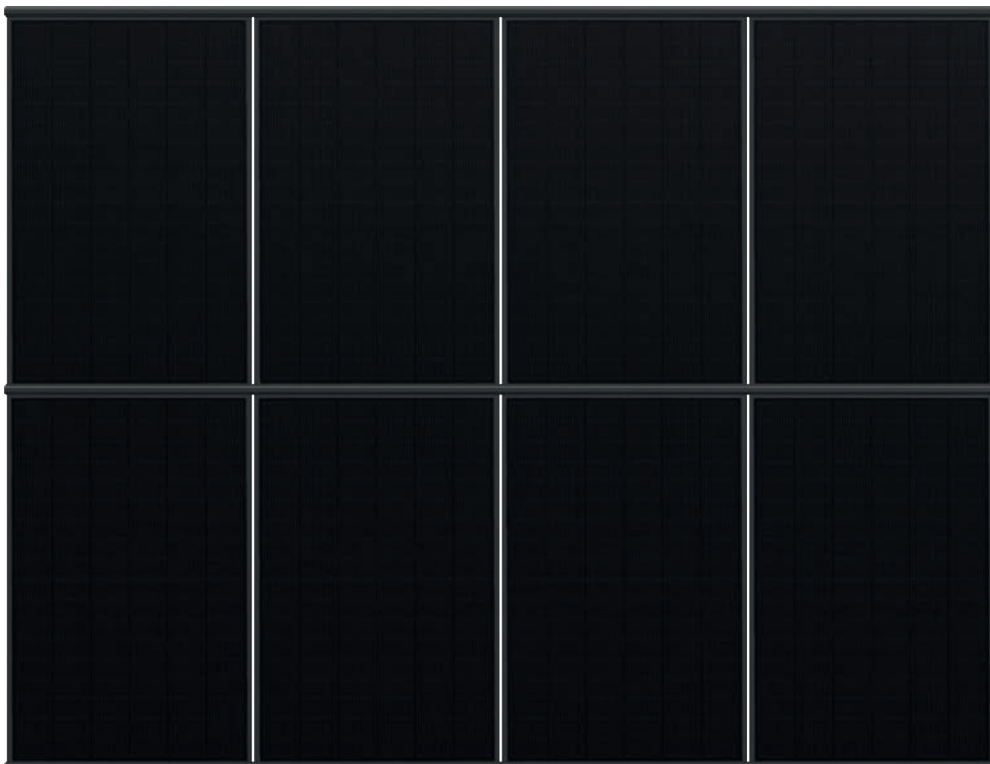
- » Quick and easy 90° cross connection to RAIL 35, 40, 60, 120 and RAIL 7
- » Convenient and time-saving installation from the top
- » Only one tool required: Torx 40
- » Easy to release and reposition
- » Suitable to connect to a lightning protection system
- » Extremely low design, only 20 mm high
- » Easy handling
- » Convenient attachment to the rail
- » Works with all RAILS as well as rails of the facade systems



Item no. <b>91204-00</b>	EAN 4262355112517	Cross Connector 2.0	100 pcs. per PU
--------------------------	-------------------	---------------------	-----------------



*1 module-wide installation in landscape  
with a profile length of 1790 mm*



*4 modules in portrait  
with a profile length of 4575 mm*





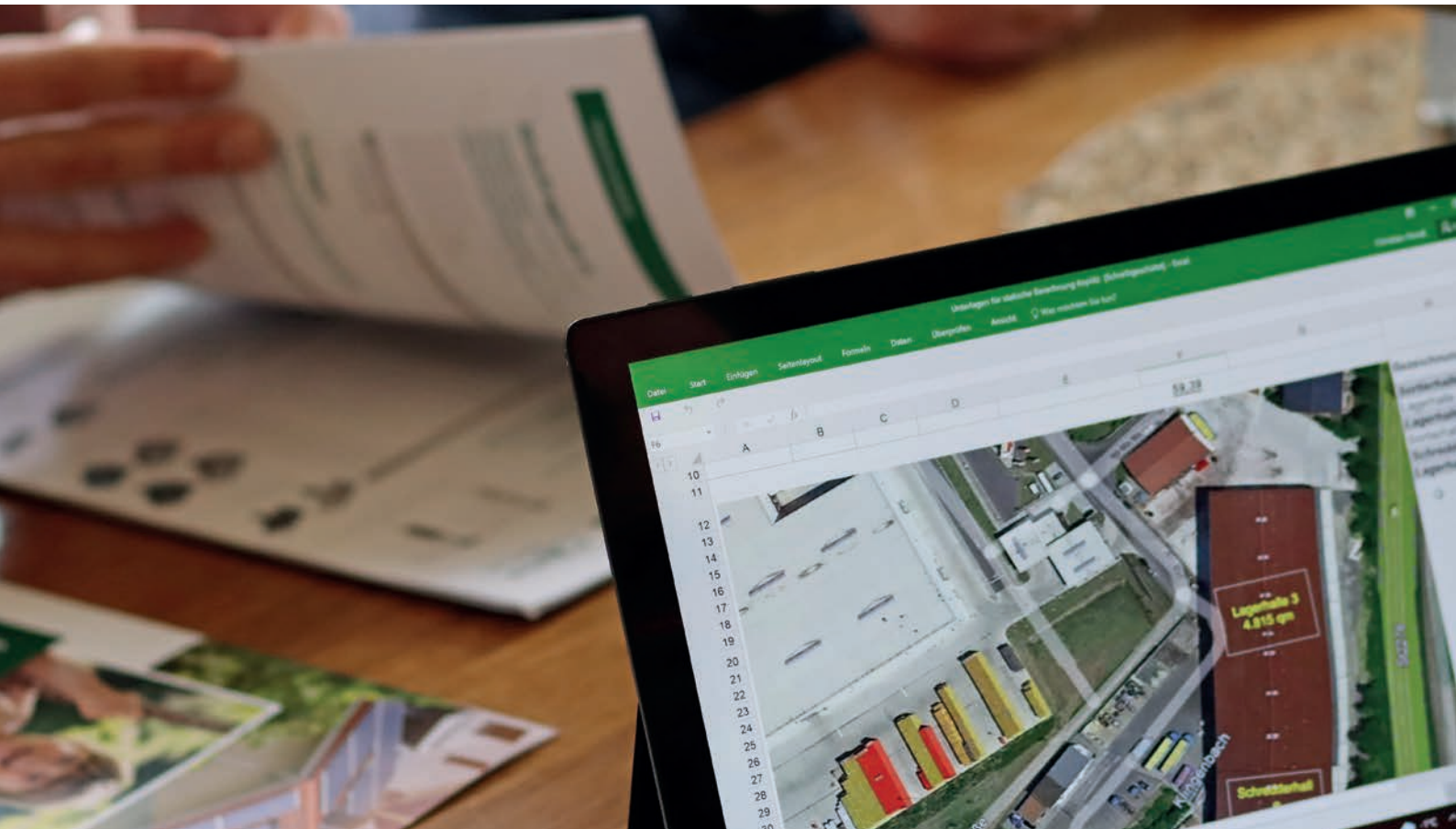
*Cover, end cap and Facade System Mid*



*Cover, end cap and Facade System Top*







SL Rack  
[YouTube](#)



SL Rack  
[Website](#)



SL Rack  
[Online ordering system](#)



Contact us  
for an offer:

**SL Rack GmbH**  
Münchener Straße 1  
83527 Haag i. OB  
Email: [sales@sl-rack.de](mailto:sales@sl-rack.de)  
Phone: +49 8072 3767-0  
[www.sl-rack.com](http://www.sl-rack.com)