



## ASSEMBLY INSTRUCTIONS



Item no. 11117-00

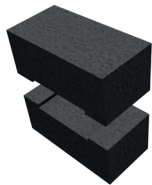
**Required tools**

- » Cordless screwdriver with Torx 40 bit attachment
- » Wood drill  $\varnothing$  6 mm
- » Torque wrench with Torx 40 bit attachment
- » Measuring tools

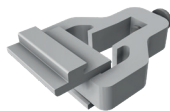
**Other required documents**

- » Product data sheet SL ALU Beaver Slate
- » Disposal instructions
- » Maintenance instructions for pitched roofs

All documents are available at [www.sl-rack.co.uk](http://www.sl-rack.co.uk) visible.

**Accessories:**

**SL Waterproof**  
Item no. 97402-00



**Vertical clamp combination**  
Item no. 11105-05


**Fasteners:**

2x flat head screws (Item no. 9210-10/12/28)\*

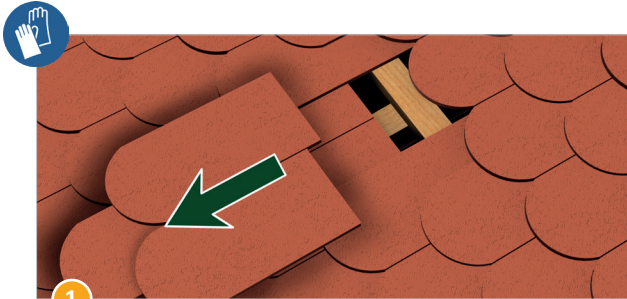
\* Our warranty conditions apply. These are always available on the Internet at [www.sl-rack.co.uk](http://www.sl-rack.co.uk)

\* The length of the screw depends on the roof structure. Before selecting the screw, measure the height of the roof structure so that the screw is screwed at least 40 mm into the rafter.

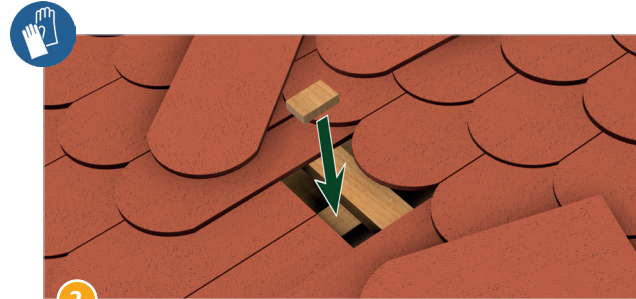
**Safety and warning instructions**

	Installation according to ZVDH guidelines.
	Risk of injury from falling objects. Before starting assembly work, set up barriers in the danger area and warn people in the vicinity!
	Planning, installation and commissioning may only be carried out by qualified specialist personnel.
	Incorrect installation can lead to damage to the roof and the entire PV system.
	Danger of falling! There is a danger of falling when working on the roof and when climbing up and down. It is essential to observe accident prevention regulations and use suitable fall protection. PV mounting systems are not suitable as climbing aids or fall protection. The roof must be stable.
	For proper and safe use, follow these instructions. Keep for future reference.
	Use a safety harness.
	Use eye protection.
	Use gloves.

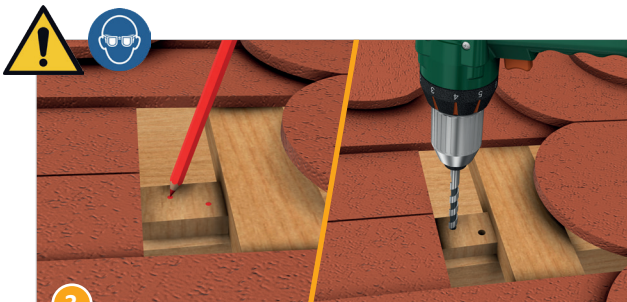
## Assembly process



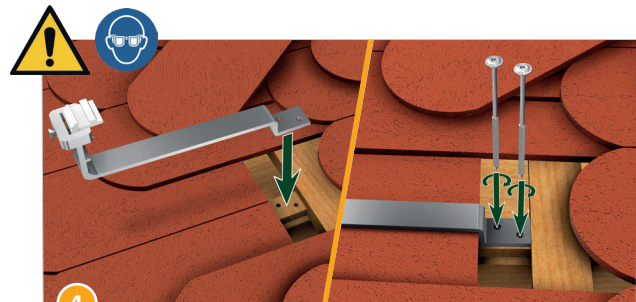
1 Cover the bricks at the rafters.



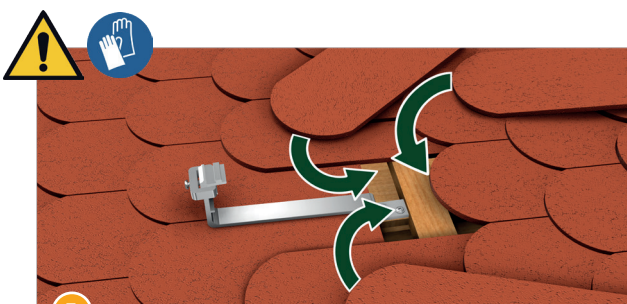
2 Place a base plate or a wooden wedge on the roof sub-roof to compensate for the height.



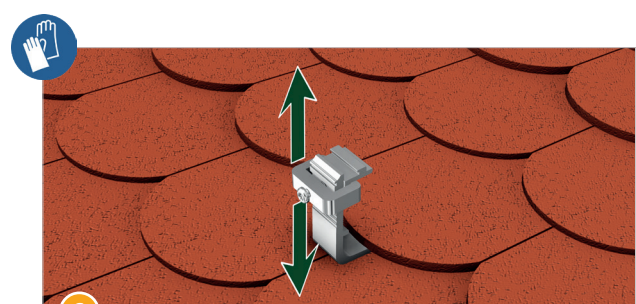
3 Pre-drill the mounting holes with a wood drill.



4 Fasten the hook with the optionally available flat head screws.  
Attention: The screw length can be found in the data sheet.



5 Re-cover the roof tiles.



6 The clamp combination has an adjustment range of 25 mm and is only screwed together with the rail.



## Technical Data

<b>Material</b>	Aluminium
<b>Design Tool</b>	SL-Rack-Configurator <b>Solar.Pro.Tool</b> .
<b>Statics</b>	The statics calculation takes place as per the current country-specific standards (EN 1991, EC1 for Germany). Depending on snow or wind loads or for large modules, it may be necessary to use more than the standard 4 attachment points. Please make sure to comply with the instructions of the module manufacturer contained in the installation manual. We do not assess the load-bearing capacity of the roof.
<b>Other information</b>	Disassembly must be carried out in reverse order, taking into account the applicable safety regulations. Information on disposal and recycling can be found on the website at <a href="http://www.sl-rack.co.uk">www.sl-rack.co.uk</a> . Information on maintenance instructions can be found on the website at <a href="http://www.sl-rack.co.uk">www.sl-rack.co.uk</a> .

**Your opinion is important to us!**

It is our top priority to make the installation process for you as quick, easy and efficient as possible. Please share your experiences, ideas or criticism with us, so we can continue to improve our products and develop new ones.



SL Rack **Feedback**  
[Provide Feedback >](#)



SL Rack **Website**  
[Check it out >](#)



SL Rack **YouTube**  
[Watch videos >](#)

Find us on



Subject to technical  
changes and misprints.  
Version 12/2024 V2