



### Trapez 6

Item no. 14206-01

### Your advantages with our products

- » Time-saving attachment on trapezoidal sheet metal roofs.
- » Reliable sealing with integrated EPDM sealing rubber.
- » Sleek look due to black colour.
- » Universal trapezoidal fastener.
- » Easy twisting into the bottom rail channel of any RAIL.
- » **Dimensions:** Length 110 mm, width 30 mm, height 18 mm
- » **Material:** PA66 GF35
- » Weight: 0.041 kg
- » Colour: Black



EN 1090-1  
Werkseigene  
Produktions-  
kontrolle  
  
www.tuv.com  
ID 9000000000



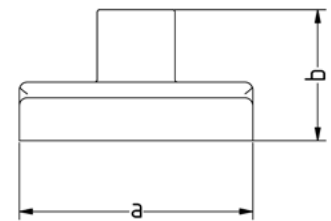
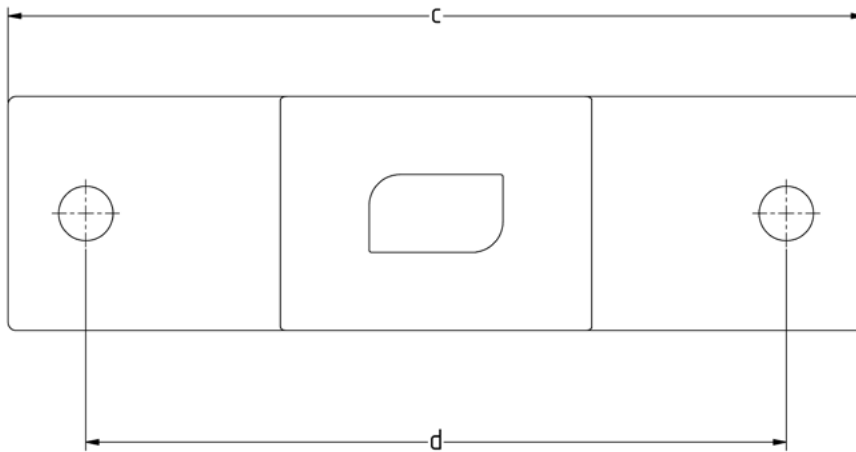
\*Our warranty conditions apply. They can be viewed online at [www.sl-rack.com](http://www.sl-rack.com)

For ease of reading, the generic masculine form is used throughout this product sheet. Unless otherwise stated, personal designations used in this installation manual refer to all genders.

Trapez 6 is an efficient trapezoidal fastener made of PA66 GF35. It is designed for an easy installation in the bottom rail channel of any SL Rack RAIL. Equipped with an EPDM seal, it ensures reliable sealing and is ideal for use in combination with Trapez 4-2.0.

## Dimensions

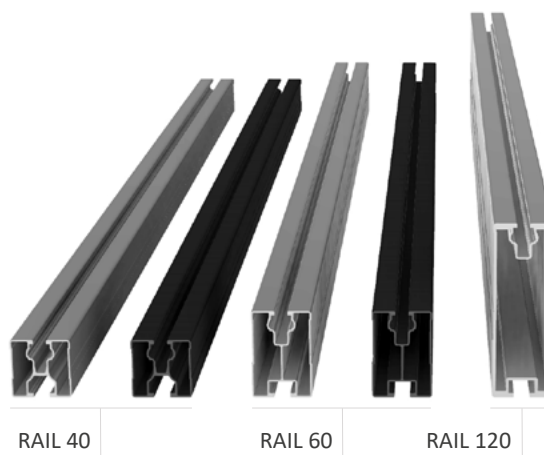
	a	b	c	d
<b>Trapez 6</b>	30 mm	18 mm	110 mm	90 mm



## Accessories



**Trapez 4-2.0**  
Item no. 11204-00



**Rail 40/60/120**  
Item no. 81140-XX, 81160-XX, 81112-XX



**Self-tapping screw 6 x 25**  
Item no. 93160-25



**Trapez 6 Cover**  
Item no. 11204-01

## Installation

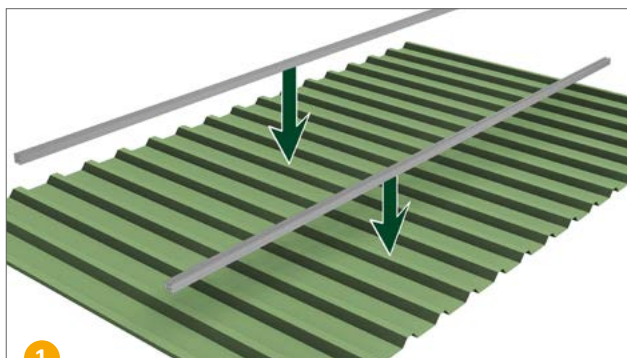


**Note:** According to DIN EN 1990-4:2018, paragraph 5.5.1, the minimum sheet thickness is 0.75 mm, unless the manufacturer of the trapezoidal sheet has an approval of the General Building Authority. The following torque values typically apply for installation on trapezoidal sheets:

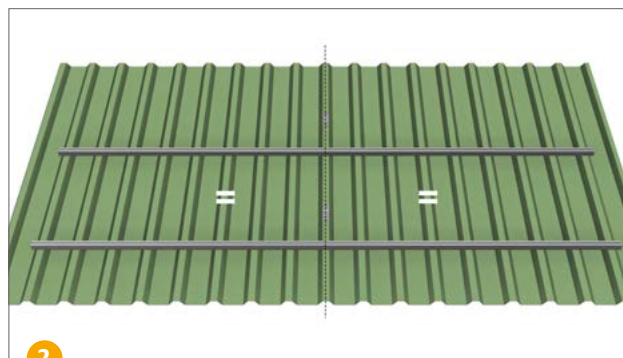
Sheet thickness::	0,5 mm	0,63 mm	0,75 mm	1 mm
Torque:	1 Nm	1 Nm	2 Nm	2 Nm



**Attention:** Trapez 6 enables thermal expansion of the RAILS through a sliding connection on the trapezoidal roof. To ensure controlled thermal expansion, one Trapez 4-2.0 is required per row as a fixated connection. Mount Trapez 4-2.0 on the same rib for each row of RAILS. The **number** of connectors is stated in the static report of the design tool.

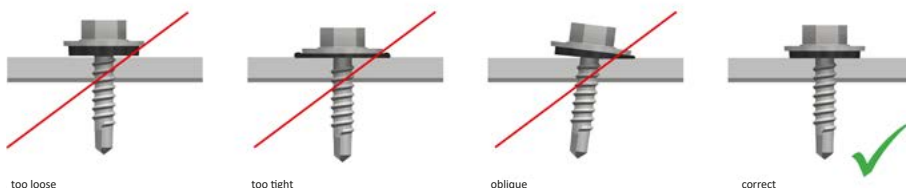


Lay out the RAILS on the trapezoidal roof to determine the ideal position.

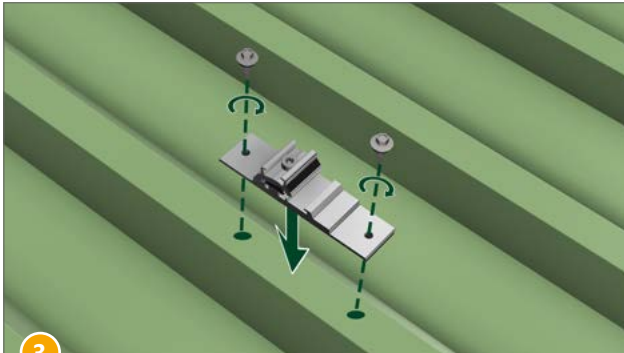


Attach Trapez 4-2.0 to the rib in the middle of the module row. Ensure correct spacing.

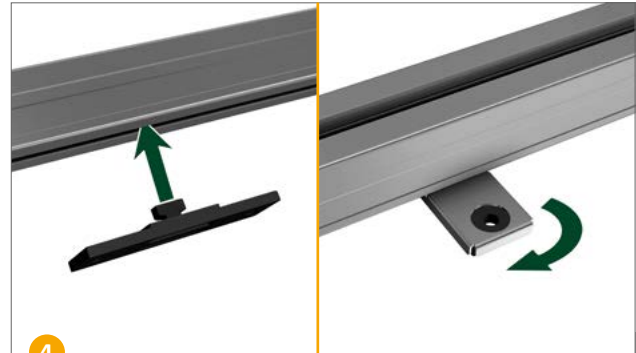
Place the separately available self-drilling screw incl. EPDM sealing washer exactly at a 90° angle to the rib and fixate it with the appropriate tightening torque. This is the only way to ensure a water-sealing connection through the pre-installed EPDM rubber strip on the bottom. Pay special attention to the sealing washer. The screw must not be tightened either too loosely, nor too tightly, so that the sealing washer can perform its function optimally. Incorrect tightening can quickly lead to leaks.



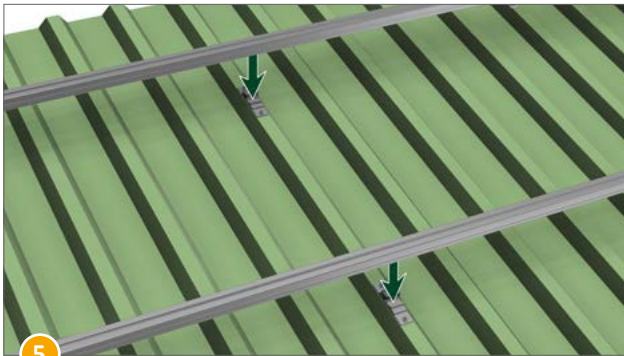
**Note:** Once the screw has been installed, it must not be loosened and screwed into the same hole again.



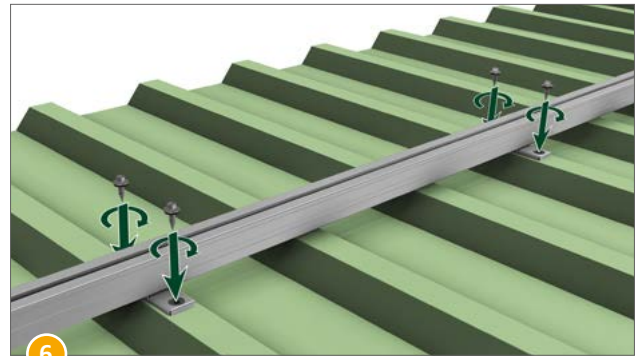
3 Attach Trapez 4-2.0 to the rib of the trapezoidal sheet (for torque value see table on page 3).



4 Twist Trapez 6 into the bottom rail channel in the direction of the arrow.  
Optional: Place the cover onto Trapez 6 before twisting it in.



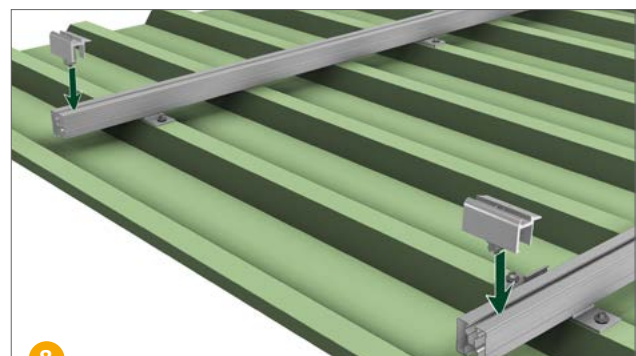
5 Tighten the RAILS with a torque of 10 Nm.



6 Align Trapez 6 in the center of the rib and then ...

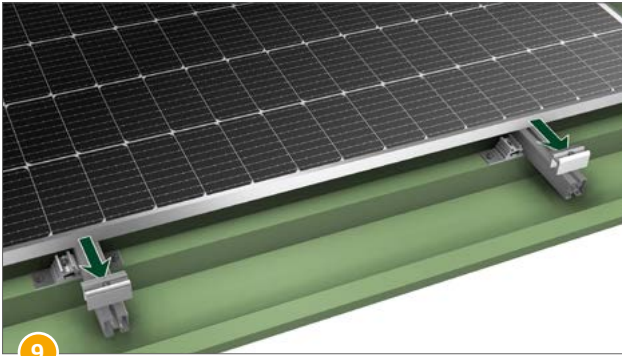


7 ... fasten it with two self-tapping screws 6 x 25 (item no. 93160-25), using the appropriate torque. Start from Trapez 4-2.0 to the outside.

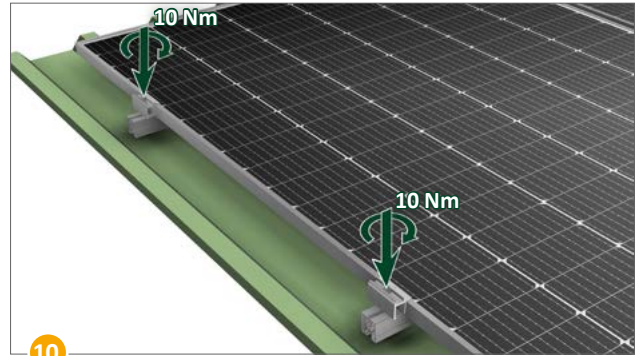


8 Insert the end clamp into the RAIL.  
**Attention:** Note the safety distance of 30 mm from the end of the RAIL.





Place the module on the RAILS and align it.



Fasten the module with mid and end clamps with a torque of 10 Nm.

**Done.**

### Additional instructions

- Disassembly must be carried out in reverse order, taking into account applicable safety regulations.
- Information on disposal and recycling can be found on our website at [www.sl-rack.com](http://www.sl-rack.com).

## Technical Data

**Material** PA66 GF35, aluminium

**Design Tool** SL-Rack Configurator **Solar.Pro.Tool**

**Statics** The structural analysis is carried out in accordance with the current country-specific standards (EN 1991, EC1 for Germany). Depending on snow loads, wind loads, or when utilizing large modules, it may be necessary to use more than the usual 4 fastening points. Make sure to observe the installation manual of the respective module manufacturer. The load-bearing capacity of the roof has not been evaluated by SL Rack.

SL Rack  
[YouTube](#)



SL Rack  
[Website](#)



SL Rack  
[Online-ordering  
system](#)



Contact us  
for an offer:

**SL Rack GmbH**  
Münchener Straße 1  
D-83527 Haag i. OB  
Email: [sales@sl-rack.com](mailto:sales@sl-rack.com)  
Phone: +49 8072 3767-0  
[www.sl-rack.com](http://www.sl-rack.com)

Subject to technical changes  
and misprints.  
Version 07/2025 V01