

Trapez 5

Item no. 11202-01

Your advantages with our products

- » Convenient and time-saving installation from the top
- » Short rail with integrated rail channel for horizontal module installation
- » Vertical module mounting possible through additional use of Cross Connectors and RAILS
- » Installation on top of the rib ensures best accessibility and greatest possible distance from the waterbearing layer
- » Due to the increased contact area, higher forces can be transferred via the trapezoidal sheet
- » Optional: Potential Equalization Plate
- » Pre-installed EPDM rubber is UV resistant and ensures water-sealing of the attachment
- » Self-tapping screws incl. EPDM sealing washer available separately
- » Material: Aluminum, EPDM rubber

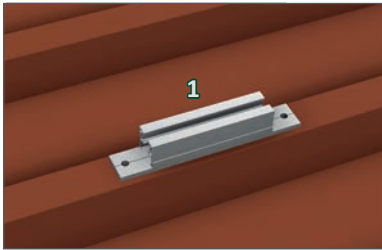
*Our warranty conditions apply.
They are available at www.sl-rack.com

Installation



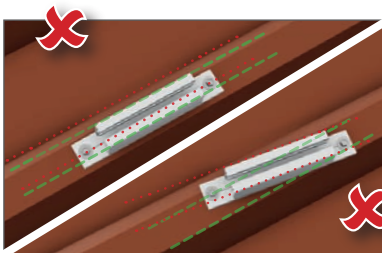
Please note: according to DIN EN 1990-4:2018 para. 5.5.1. a minimum sheet metal thickness of 0.75 mm is required for the load-bearing layer, unless the trapezoidal sheet metal manufacturer obtained a general approval from the building authority that allows lower sheet thicknesses. Please verify!

1. Position Trapez 5 according to the structural report, centered and parallel to the rib.

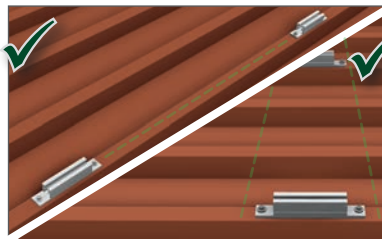


The attachments should always be positioned symmetrically.

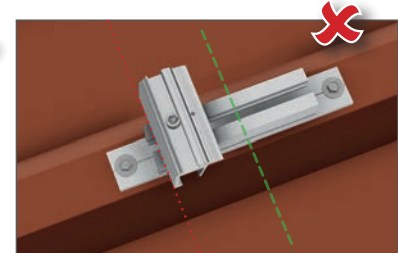
In case of an optional cross-rail system the max. cantilever according to the structural report has to be adhered to.



Always install centered, parallel to the rib.

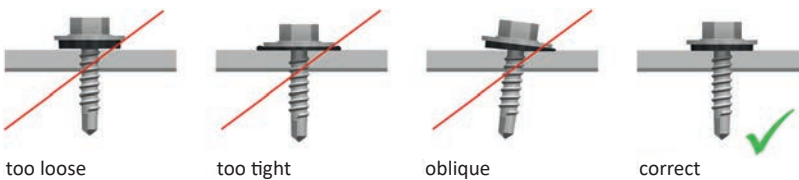


Always install Trapez 5 vertical on top of the ribs, the attachments should be in a horizontal line.



The module clamps should be centered. The areas at the edge of the rail channel must not be used due to statics.

2. Place the separately available self-drilling screw incl. EPDM sealing washer exactly at a 90° angle to the rib and fixate it with a tightening torque of 2 Nm with a cordless screw driver with depth stop. This is the only way to ensure a water-sealing connection through the pre-installed EPDM rubber strip on the bottom. Pay special attention to the sealing washer. The screw must not be tightened either too loosely, nor too tightly, so that the sealing washer can perform its function optimally. Incorrect tightening can quickly lead to leaks.

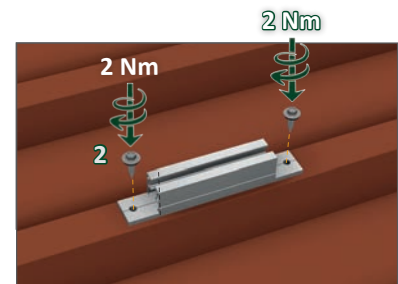


too loose

too tight

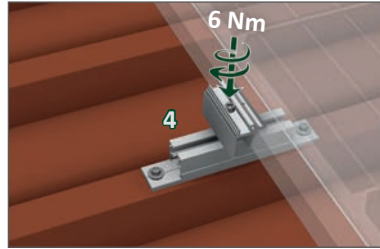
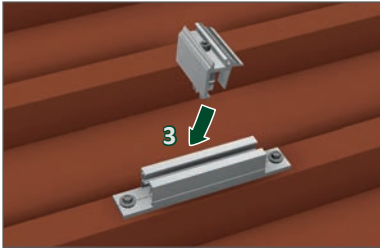
oblique

correct



Note: Once the screw has been installed, it must not be loosened and screwed into the same hole again.

3. Press the claw of the end clamp into the rail channel.
4. Place the modules in landscape orientation/horizontally onto Trapez 5 and fixate them with mid and end clamps with Torx 40 with a tightening torque of 6 Nm.



5. Optionally, the modules can be mounted vertically/in portrait orientation by using additional Cross Connectors and continuous RAILS.

Accessories



Item no.

93155-25 Self-tapping screw 5.5 x 20-25, sealing washer Ø 16 mm

Drilling capacity steel..... 0.5 mm - 2.0 mm
 Drilling capacity aluminum..... 0.5 mm - 2.0 mm
 Packaging unit (PU)..... 100 pieces

93160-25 Self-tapping screw 6.0 x 25-25, sealing washer Ø 16 mm

Drilling capacity steel..... 0.4 mm - 2.0 mm
 Drilling capacity aluminum..... 0.5 mm - 2.0 mm
 Packaging unit (PU).....100 pieces

93161-25 PREMIUM Self-tapping screw 6.0 x 25, sealing washer Ø 16 mm

Drilling capacity steel.....0.5 mm - 1.5 mm
 Drilling capacity aluminum.....0.4 mm - 2.0 mm
 Packaging unit (PU).....100 pieces



93155-26 Self-drilling screw 5.5 x 25, sealing washer Ø 16 mm

Drilling capacity steel..... 0.4 mm - 1.5 mm
 Drilling capacity aluminum..... 0.4 mm - 5.0 mm
 Packaging unit (PU)..... 100 pieces



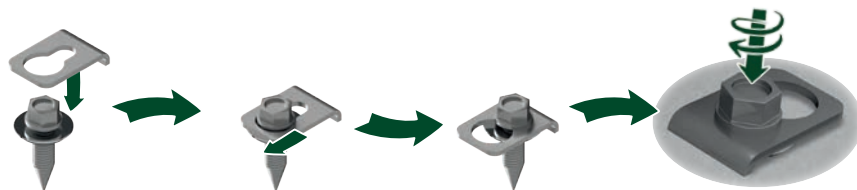
Beware of metal swarf on the roof!

91202-00 Cross Connector



93201-00 Potential Equalization Plate

The Potential Equalization Plate transfers the potential of the system/modules to the trapezoidal roof, provided that the trapezoidal sheet metal roof is already grounded. The Potential Equalization Plate has to be placed between the screw head and the sealing washer.





Technical Data

Material	Aluminum, EPDM rubber (sealing)
Design Tool	SL-Rack-Configurator Solar.Pro.Tool .
Statik	The statics calculation takes place as per the current country-specific standards (EN 1991, EC1 for Germany). Depending on snow or wind loads or for large modules, it may be necessary to use more than the standard 4 attachment points. Please make sure to comply with the instructions of the module manufacturer contained in the installation manual. We do not assess the load-bearing capacity of the roof.



We want to make your everyday work easier.
Your praise, criticism and suggestions for improvement help us to do this. We look forward to your feedback.



SL Rack **Feedback**
[Provide Feedback >](#)



SL Rack **Website**
[Check it out >](#)



SL Rack **YouTube**
[Watch videos >](#)

Find us on



Subject to technical changes
and misprints.
Version 05/2024 V8