

**Trapez 1**

Item no. 11201-01

Your advantages with our products

- » Very cost-effective and material-saving railless option for horizontal module installation
- » Suitable for almost any trapezoidal roof
- » Optional: Potential Equalization Plate
- » Pre-installed EPDM rubber is UV-resistant and ensures water-sealing of the attachment
- » Self-tapping screws incl. EPDM sealing washer available separately
- » Material: Aluminum, EPDM rubber

*Our warranty conditions apply.
They are available at www.sl-rack.com

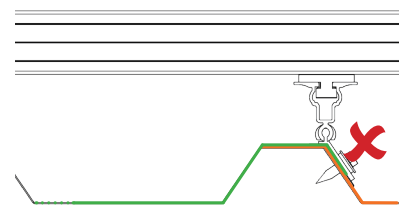
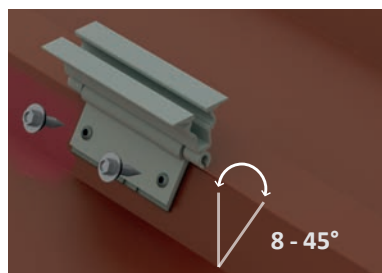
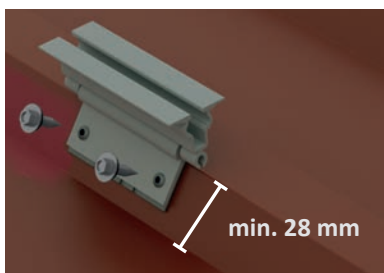
Installation



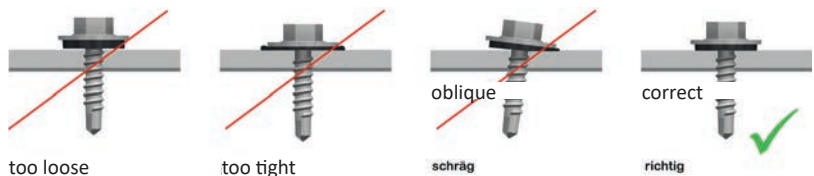
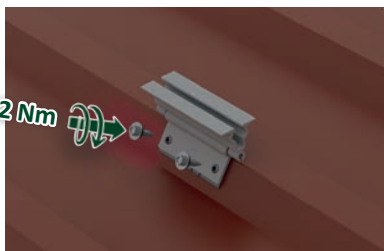
Please note: according to DIN EN 1990-4:2018 para. 5.5.1. a minimum sheet metal thickness of 0.75 mm is required for the load-bearing layer, unless the trapezoidal sheet metal manufacturer obtained a general approval from the building authority that allows lower sheet thicknesses. Please verify!

1. Place Trapez 1 on the steel or aluminum sheet, which has to have a min. thickness of 0.5 mm. Now press it onto the flank of the rib, which has to have a min. height of 28 mm. The angle of inclination of the flank should lie between 8-45°.

Please ensure that Trapez 1 is not installed where two trapezoidal sheets are joining. However, if this can not be avoided by moving to the flank of the adjacent rib, an additional screw on the top of the rib, where the 2 sheets join, needs to be installed, to ensure proper water-sealing.

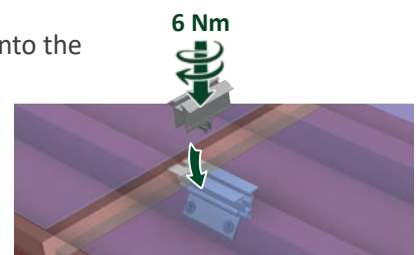


2. Place the separately available self-drilling screw incl. EPDM sealing washer exactly at a 90° angle to the flank and fixate it with a tightening torque of 2 Nm with a cordless screw driver with depth stop. This is the only way to ensure a water-sealing connection through the pre-installed EPDM rubber strip on the bottom. Pay special attention to the sealing washer. The screw must not be tightened either too loosely, nor too tightly, so that the sealing washer can perform its function optimally. Incorrect tightening can quickly lead to leaks.

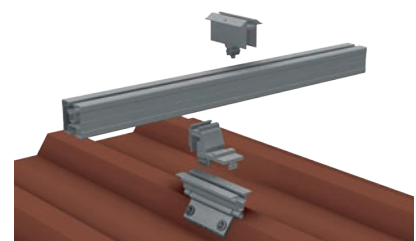


Note: Once the screw has been installed, it must not be loosened and screwed into the same hole again.

3. Place the module onto Trapez 1 and press the claw of the end clamp into the rail channel. Now fixate the end clamp with Torx 40 with a tightening torque of 6 Nm.
4. Use mid clamps between the modules and also fixate them with a tightening torque of 6 Nm. Finalize the row of modules in landscape orientation with an end clamp.



5. By additionally using cross connectors and continuous rails, the modules can be installed in portrait.



Accessories



Item no.

93155-25 Self-tapping screw 5.5 x 20-25, sealing washer Ø 16 mm

Drilling capacity steel..... 0.5 mm - 2.0 mm
 Drilling capacity aluminum..... 0.5 mm - 2.0 mm
 Packaging unit (PU)..... 100 pieces

93160-25 Self-tapping screw 6.0 x 25-25, sealing washer Ø 16 mm

Drilling capacity steel..... 0.4 mm - 2.0 mm
 Drilling capacity aluminum..... 0.5 mm - 2.0 mm
 Packaging unit (PU).....100 pieces

93161-25 PREMIUM Self-tapping screw 6.0 x 25, sealing washer Ø 16 mm

Drilling capacity steel.....0.5 mm - 1.5 mm
 Drilling capacity aluminum.....0.4 mm - 2.0 mm
 Packaging unit (PU).....100 pieces



93155-26 Self-drilling screw 5.5 x 25, sealing washer Ø 16 mm

Drilling capacity steel..... 0.4 mm - 1.5 mm
 Drilling capacity aluminum..... 0.4 mm - 5.0 mm
 Packaging unit (PU)..... 100 pieces



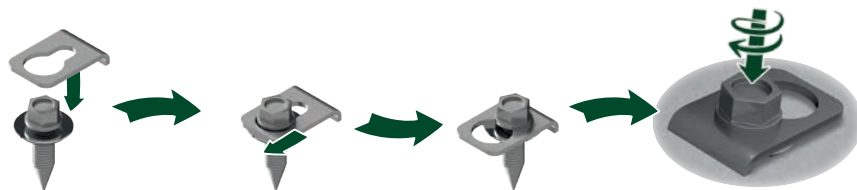
Beware of metal swarf on the roof!

91202-00 Cross Connector



93201-00 Potential Equalization Plate

The Potential Equalization Plate transfers the potential of the system/modules to the trapezoidal roof, provided that the trapezoidal sheet metal roof is already grounded. The Potential Equalization Plate has to be placed between the screw head and the sealing washer.





Technical Data

Material	Aluminum, EPDM rubber (sealing)
Design Tool	SL-Rack-Configurator Solar.Pro.Tool .
Statik	The statics calculation takes place as per the current country-specific standards (EN 1991, EC1 for Germany). Depending on snow or wind loads or for large modules, it may be necessary to use more than the standard 4 attachment points. Please make sure to comply with the instructions of the module manufacturer contained in the installation manual. We do not assess the load-bearing capacity of the roof.

Your opinion is important to us!

We want to make your everyday work easier.
Your praise, criticism and suggestions for improvement help
us to do this. We look forward to your feedback.



SL Rack **Feedback**
[Provide Feedback >](#)



SL Rack **Website**
[Check it out >](#)



SL Rack **YouTube**
[Watch videos >](#)

Find us on



Subject to technical changes
and misprints.
Version 05/2024 V21