

Your advantages with our products

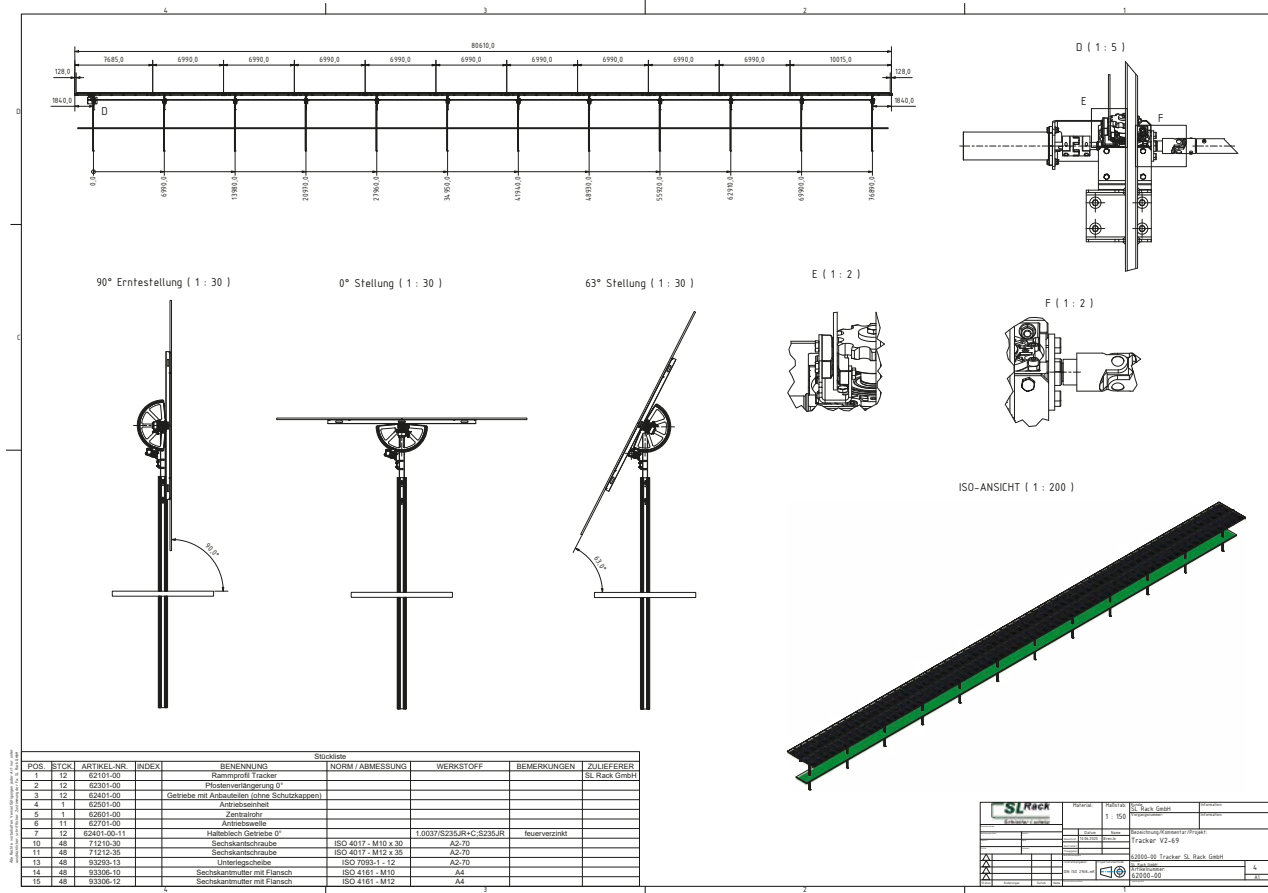
- » Option of 1P or 2P.
- » 90 % harvesting position.
- » Highest ground cover ratio (GCR > 50 %).
- » Unobstructed passage between tracker rows.
- » No galloping effect due to permanent connection to the transmission.
- » 153° range of motion (90° rotation in under six minutes).



*Our warranty conditions apply. They are available at www.sl-rack.com

Dimensions

This view serves only as a sample drawing.



Features and advantages

Largest module area per drive

Up to 400 m² (5 x 80 m) of module area per drive, providing one of the highest ground cover ratios on the market.

Independent self-locking rows with a 153° adjustment range

The modules are guided by the sprocket in every position at every pile. The permanent guidance completely eliminates the galloping effect.

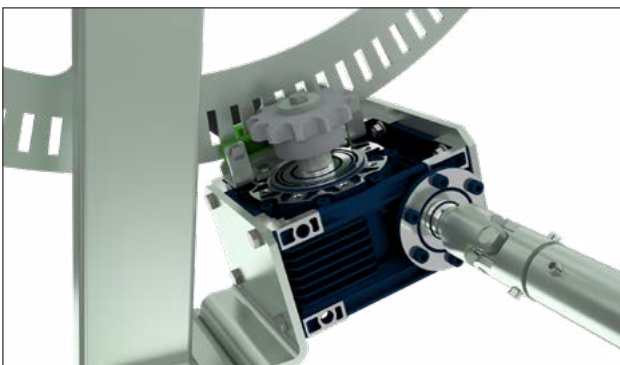
Self-sufficient control and drive unit with wireless communication

Each row is driven by a single 300-watt motor. Control is via the Suntrack TCU unit. Remote HMI and monitoring can be set up upon request. The SL Rack Tracker has snow, wind, ultrasonic, and flood sensors and can withstand any weather conditions.

Specifications

Flood protection	1,8 m for electrical components
Ground cover ratio	> 50 %
Tracking	Astronomical
Storm position, night position	0°
Backtracking	yes
Snow position	yes
Maintenance position	yes
Monitoring system	Network Control Unit / SCADA interface
Control system	Suntrack TCU with Zigbee and RS485
Conformity	DIN EN 1090; ISO 9001; CE 2006/42/EC
Protection class	IP54 / IP67
Materials	Galvanized steel, stainless steel, and plastic
Corrosivity category	Standard C4 optionally C5
Range of operating temperature	-40 °C up to +60 °C / -13 °F up to 140 °F
Foundation	Pile W182
Max. slope	10°
Max. wind speed in tracking mode (standard)	Up to 56 km/h / 35 mph (3-second wind gust)
Max. wind speed in storm position (standard)	Up to 167 km/h / 105 mph (3-second wind gust)
Warranty	10 year warranty on structural components. Availability of extended terms and maintenance contracts.

SL Tracker drive





Technical data

Type	Horizontal, single-axis, self-sufficient tracker
Module configuration	1 or 2 modules in portrait
Tracking range of motion	153° (+ 90° – 63°)
Power / modules per tracker	Approx. 85 kWp, depending on module type
Drive system	24 V DC-drive, grid-powered (self-sufficient on request)
Length of tracker	80 m / 270 ft
Width of tracker	1P 2,5 m / 8 ft; 2P 5 m / 16 ft
Height of tracker at 60°	1P 3,6 m / 11,7 ft; 2P 5,5 m / 18 ft

SL Rack
[YouTube](#)



SL Rack
[Website](#)



SL Rack
[Online-
ordering system](#)



Contact us for an offer:

SL Rack GmbH
Münchener Straße 1
D-83527 Haag i. OB
Email: sales@sl-rack.de
Phone: +49 8072 3767-0
www.sl-rack.com

Subject to technical
changes and misprints.
Version 06/2025 V01