



**Your advantages with our products**

- » Insertion system for fast and cost-efficient installation
- » Black anodized for a sleek design
- » Compatible with all SL Rack roof hooks and trapezoidal fasteners
- » Only 3 components to keep in stock
- » Suitable for all pitched roofs
- » Compatible with all modules with a 30 mm frame height



EN 1090-1  
Factory  
Production  
Control  
  
www.tuv.com  
ID: 9000039073



**Detailed views**



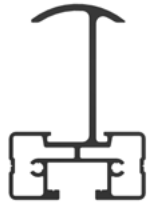
*Inserts at module clamping area*



*Profile with optional Exterior  
Connector RAIL, black anodized  
Item no. 86110-00*

\* Our warranty conditions apply. They are available at [www.sl-rack.com](http://www.sl-rack.com)

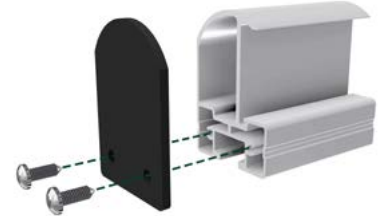
## Components



**RAIL Inlay mid, 6000 mm**  
Item no. 86501-6000



**RAIL Inlay bottom, 5750 mm**  
Item no. 86730-5750

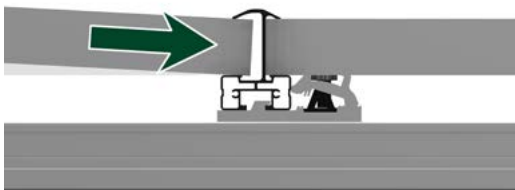


**End cap RAIL Inlay, black**  
Item no. 86730-00

- » For RAIL Inlay bottom and RAIL Inlay mid
- » Includes two mounting screws

## How the inserts work

- » The spacing between the insertion profiles is calculated as the module dimension + 10 mm.  
**Caution:** This spacing must be strictly observed!
- » The RAIL Inlay System is suitable for modules with a frame height of 30 mm.
- » The RAIL Inlay mid is used between two modules and also at the top.
- » On tiled roofs, the RAIL Inlay may only be installed in a cross-rail configuration; on trapezoidal roofs, a cross-rail configuration is not mandatory.

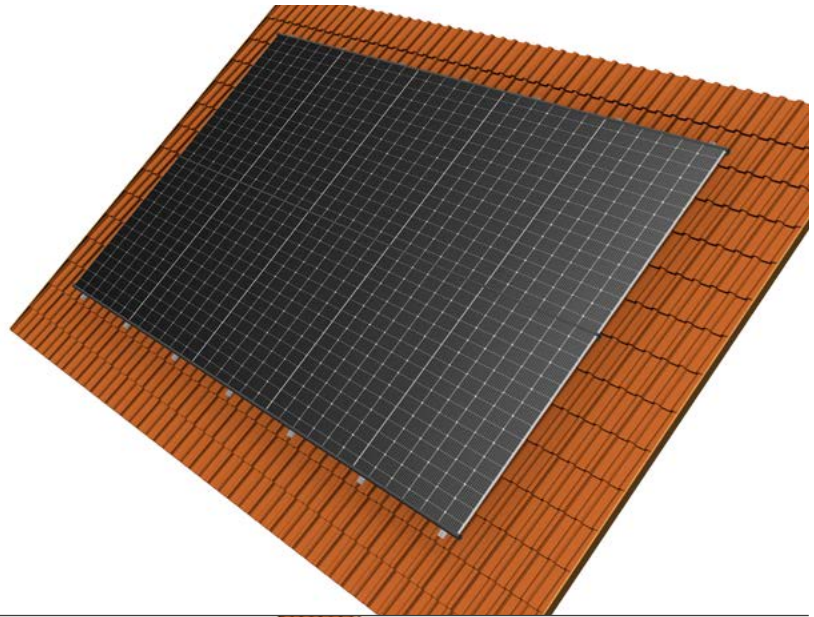


## Installation Examples

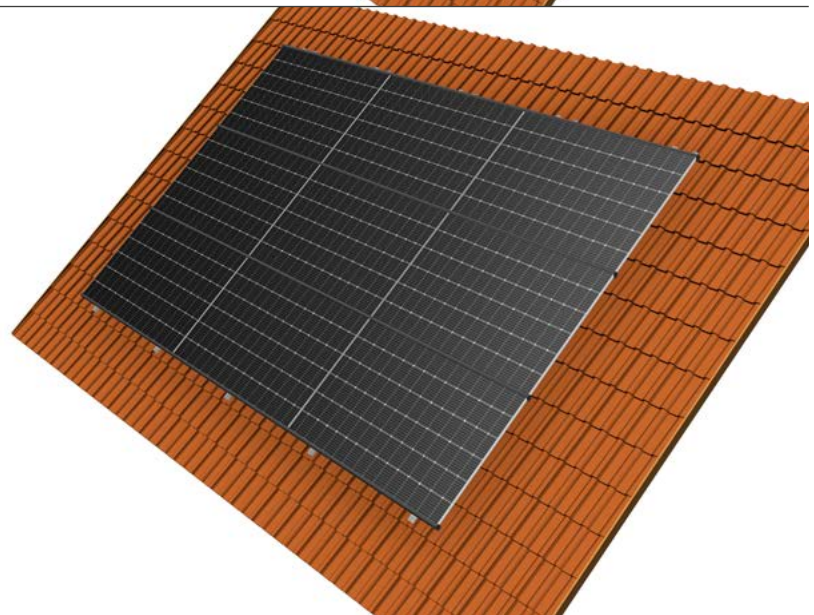


[Installation video](#)  
[RAIL Inlay](#)

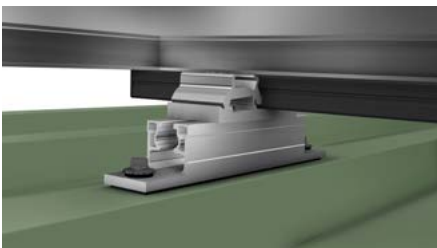
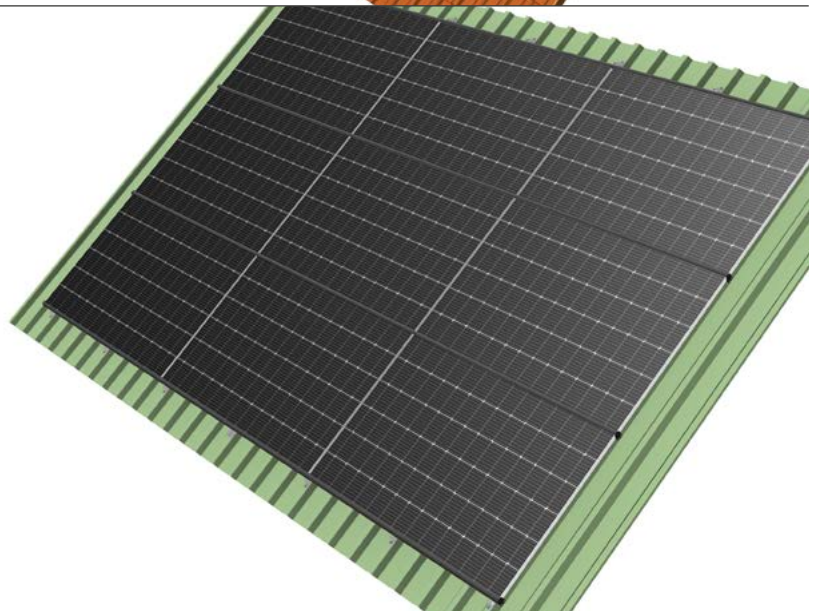
Cross-rail installation on a  
tile roof – **modules in portrait.**



Cross-rail installation on a  
tile roof – **modules in landscape.**



Installation with trapez fasteners  
on a trapezoidal roof





## Technical Data

<b>Material</b>	Aluminium
<b>Design Tool</b>	SL-Rack Configurator <b>Solar.Pro.Tool</b>
<b>Statics</b>	The structural analysis is carried out in accordance with the current country-specific standards (EN 1991, EC1 for Germany). Make sure to observe the installation manual of the respective module manufacturer. The load-bearing capacity of the roof has not been evaluated by SL Rack.

SL Rack  
[YouTube](#)



SL Rack  
[Website](#)



SL Rack  
[Online-ordering  
system](#)



Contact us  
for an offer:

**SL Rack GmbH**  
Münchener Straße 1  
D-83527 Haag i. OB  
email: [sales@sl-rack.com](mailto:sales@sl-rack.com)  
Phone: +49 8072 3767-0  
[www.sl-rack.com](http://www.sl-rack.com)

Subject to technical changes  
and misprints.  
Version 04/2026 V12