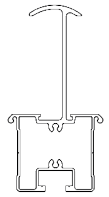




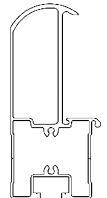
Your advantages with our products

- » Time-saving and cost-efficient installation without clamps
- » Black anodized for an elegant appearance
- » Only one-size rail: Inserts adjust to the various module heights (30 mm - 50 mm)
- » Optimized warehousing due to reduced number of components
- » Compatible with all SL Rack roof hooks and trapezoidal sheet metal connections
- » Vertical or horizontal module installation
- » Suitable for roof and façade systems
- » Available for specific module heights as a custom solution



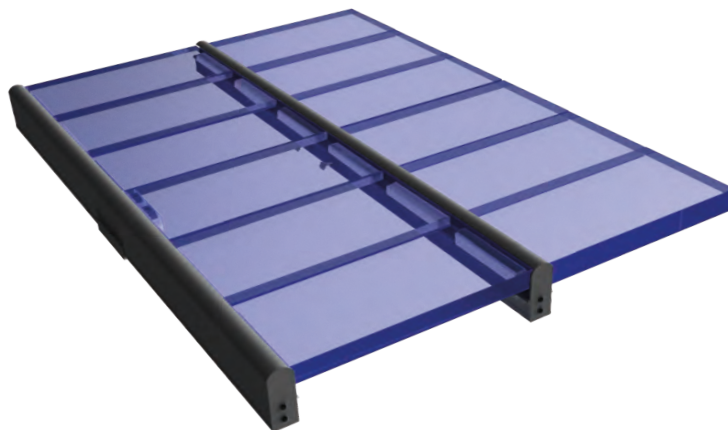
RAIL Inlay top, 6000 mm

Item no. 86501-6000



RAIL Inlay bottom, 6000 mm

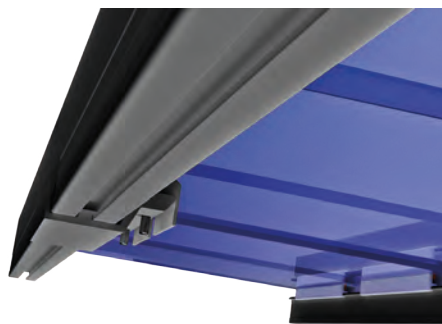
Item no. 86502-6000



Detailed Views



Inserts at module clamping area



Profile with optional Exterior Connector RAIL, black anodized
Item no. 86140-05

*Our warranty conditions apply. They are available at www.sl-rack.com

Components



End cap RAIL Inlay, black
Item no. 86525-00

- » For RAIL Inlay bottom and Rail Inlay top
- » Incl. 2 screws



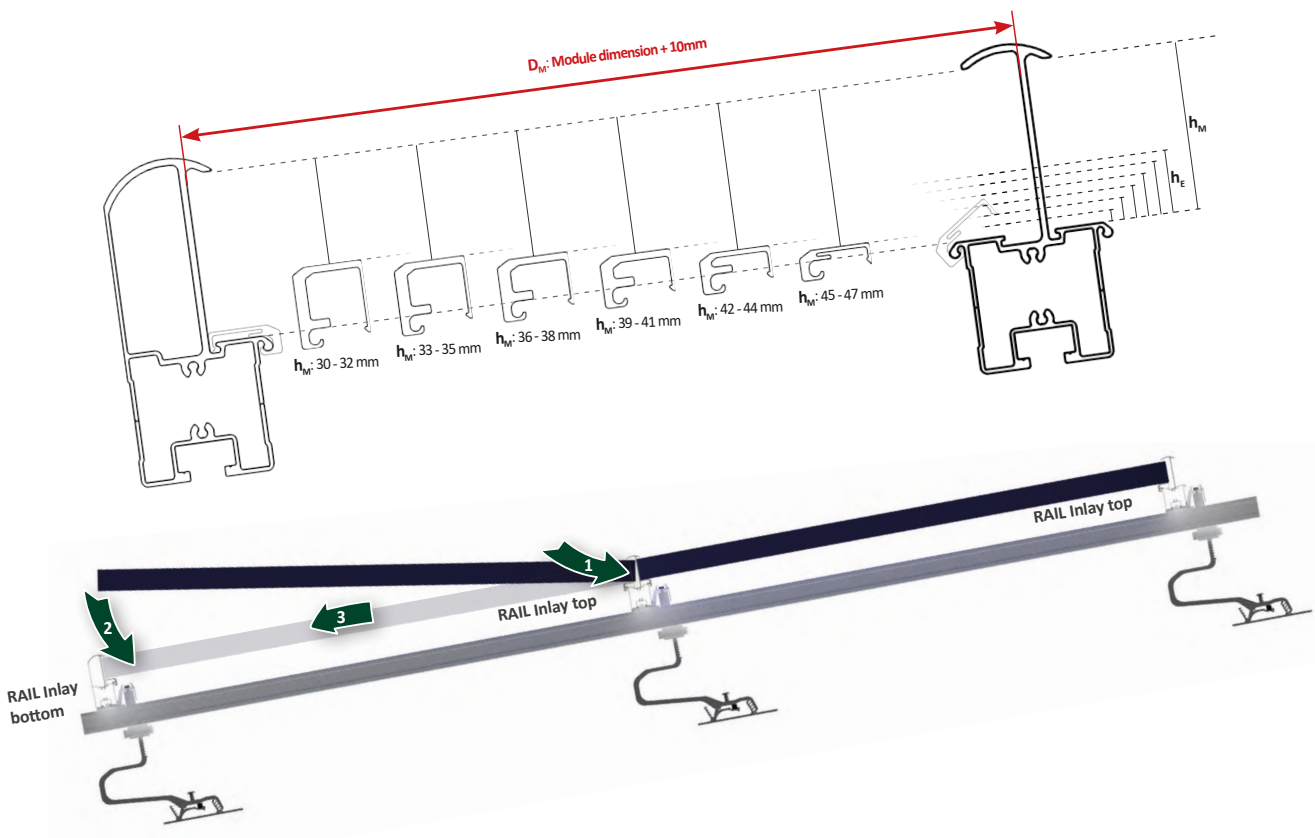
- Item no. **81501-30** Insert for module height 30 mm - 32 mm
- Item no. **81501-33** Insert for module height 33 mm - 35 mm
- Item no. **81501-36** Insert for module height 36 mm - 38 mm
- Item no. **81501-39** Insert for module height 39 mm - 41 mm
- Item no. **81501-42** Insert for module height 42 mm - 44 mm
- Item no. **81501-45** Insert for module height 45 mm - 47 mm

Inserts (Length 150 mm)

- » The inserts compensate for different module heights in the insertion system
- » The heights of the various inserts are designed to match the module frame heights established in the PV market

Functionality of the Inserts

- » The mounting distance (DM) between the inserts is the following: module dimension + 10 mm.
- » The heights of the various inserts (h_E) are designed to match the module frame heights (h_M) established in the PV market and are named accordingly. Each module requires four inserts with a length of 150 mm.
- » For the bottom rail of the array you can either use RAIL Inlay top or RAIL Inlay bottom.

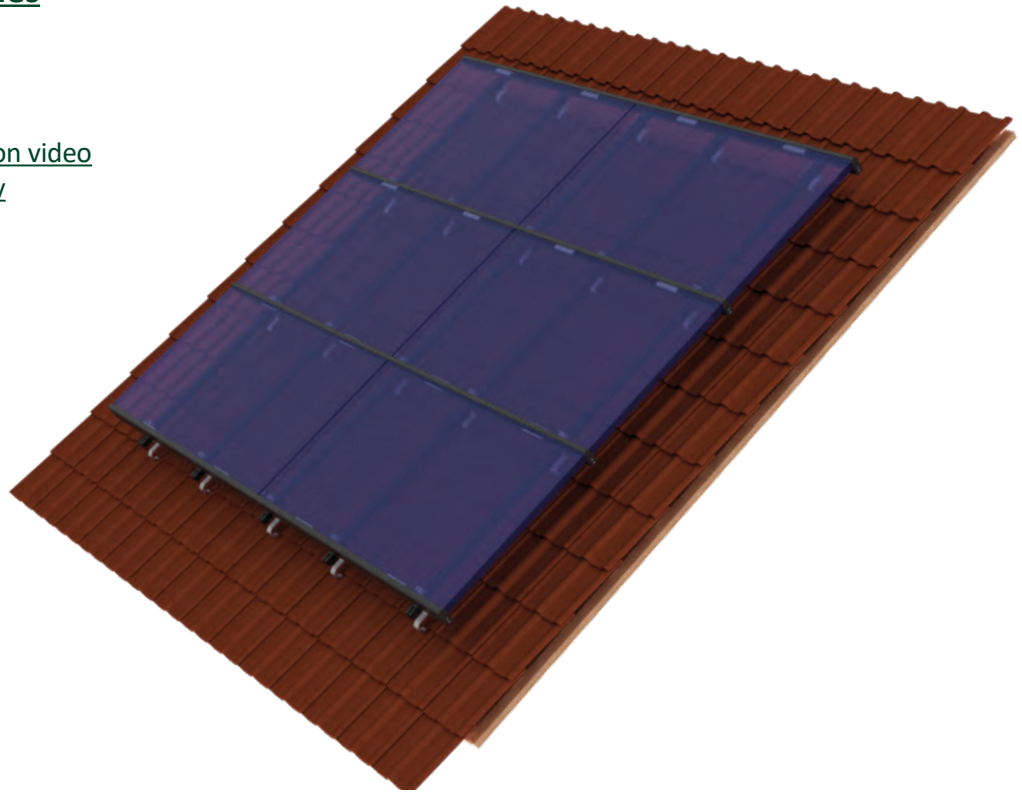


Installation Examples

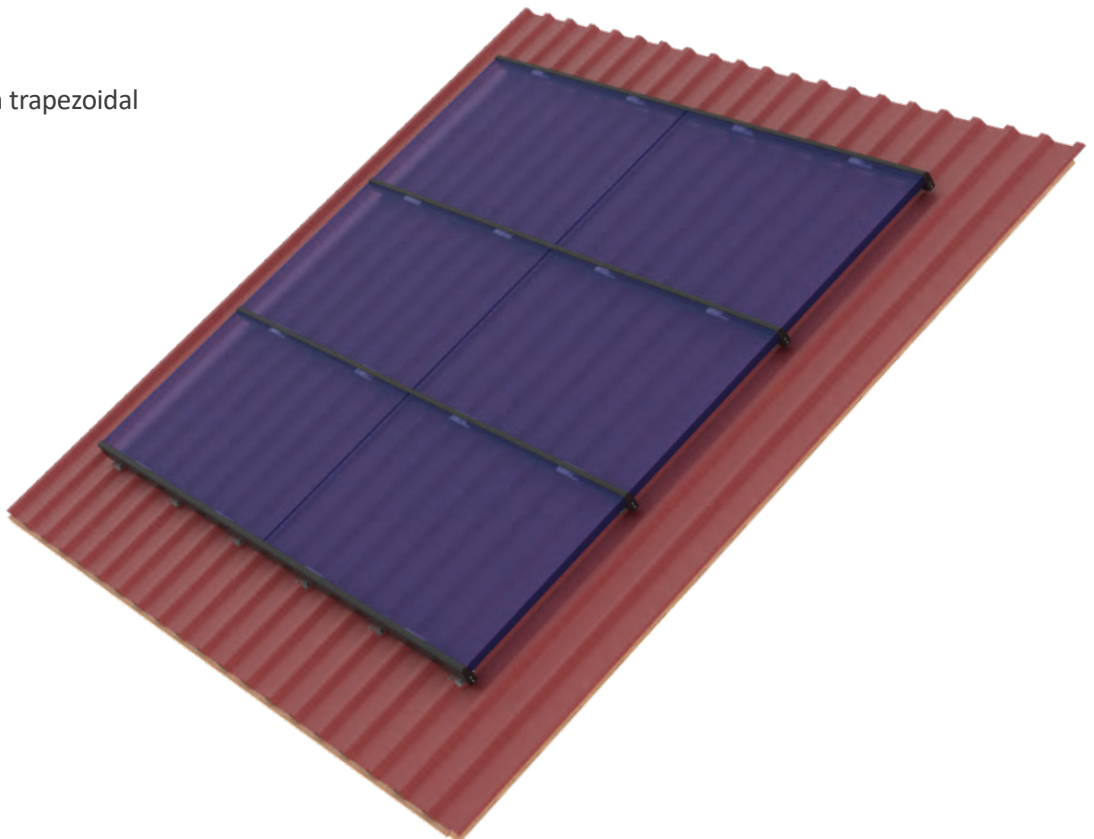


[Installation video](#)
[RAIL Inlay](#)

Installation of a cross-rail system on a tile roof



Direct installation on trapezoidal roof attachments





Technical Data

Material Aluminum

Design Tool SL-Rack-Configurator **Solar.Pro.Tool**.

Statik The structural analysis is carried out in accordance with the current country-specific standards (EN 1991, EC1 for Germany). Depending on snow loads, wind loads, or when utilizing large modules, it may be necessary to use more than the usual 4 fastening points. Make sure to observe the installation manual of the respective module manufacturer. The load-bearing capacity of the roof has not been evaluated by SL Rack.

Your opinion is important to us!

It is our top priority to make the installation process for you as quick, easy and efficient as possible. Please share your experiences, ideas or criticism with us, so we can continue to improve our products and develop new ones.



SL Rack **Feedback**
[Provide Feedback >](#)



SL Rack **Website**
[Check it out >](#)



SL Rack **YouTube**
[Watch videos >](#)

Find us on



Subject to technical
changes and misprints.
Version 05/2022 V11