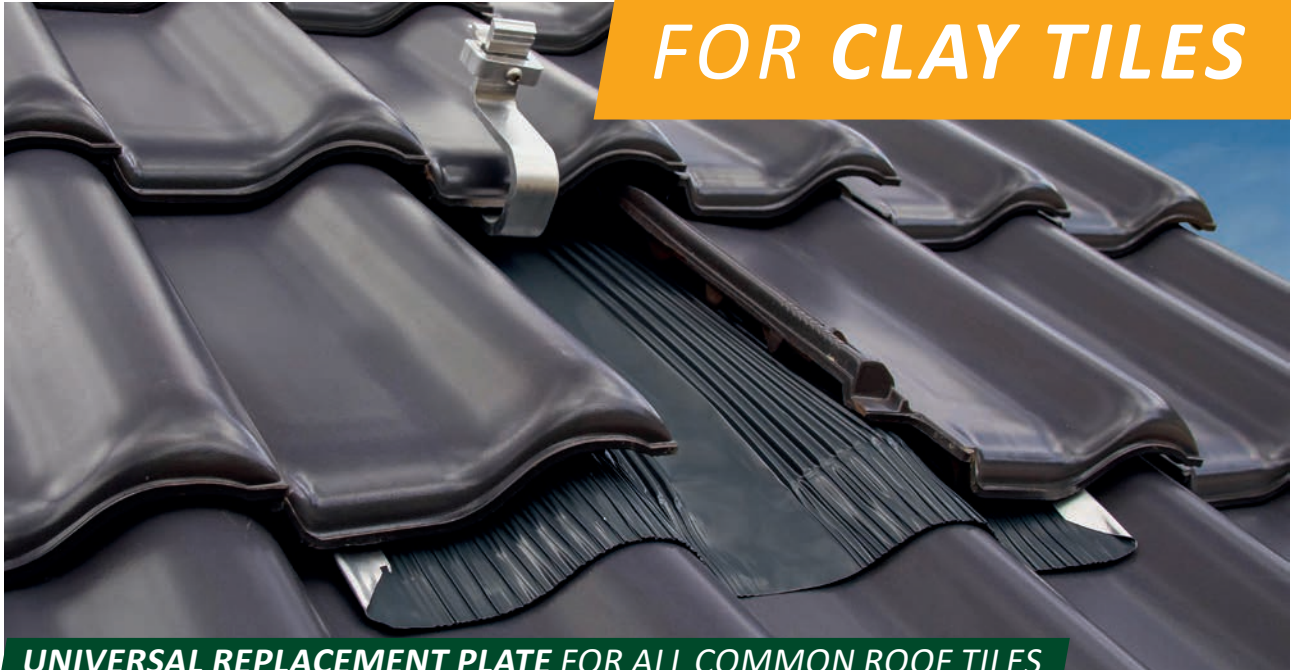
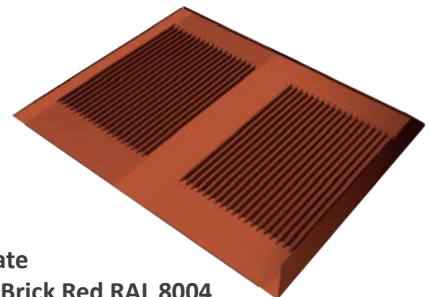


FOR CLAY TILES**UNIVERSAL REPLACEMENT PLATE FOR ALL COMMON ROOF TILES**

- » Mechanical cutting unnecessary
=> No more broken tiles
- » Flexible positioning on the roof
- » Long-lasting stability
=> Tread resistance
- » Wind calmed zones are created in the corrugated depressions
=> Water flows straight down
- » Raised panel sides
=> Maximum water sealing
- » With rodent protection
- » With proven butyl adhesive strip
- » Optimized warehousing
- » Can be combined with the SL Alu roof hook series

- » Material: Rolled aluminum sheet metal
- » Cover length: 430 mm



Beta-Plate
Colour: Brick Red RAL 8004
 Item no. 11522-00



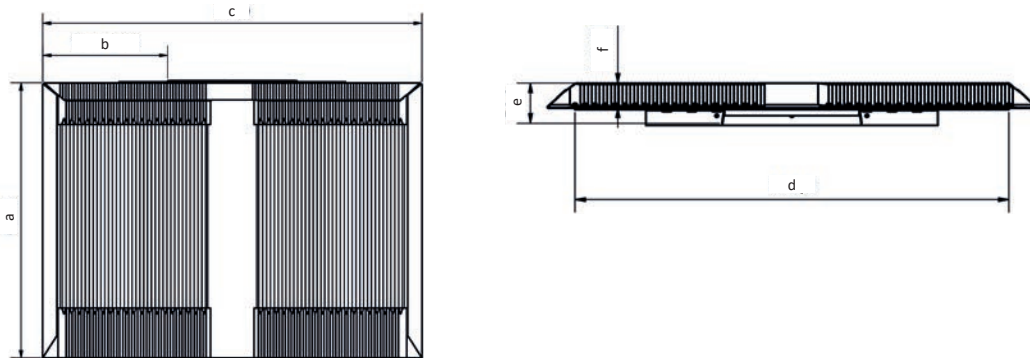
Beta-Plate
Colour: Anthracite RAL 7016
 Item no. 11522-01

*Our warranty conditions apply.
 They are available at www.sl-rack.com



Dimensions

	a	b	c	d	e	f
Beta-Plate	approx. 457 mm	approx. 193 mm	approx. 586 mm	approx. 520 mm	approx. 52 mm	approx. 32 mm



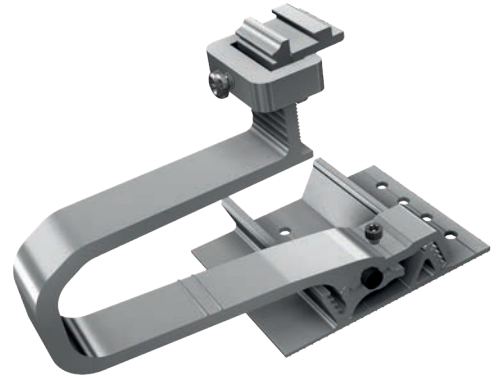
For a perfect connection to the roof, check for suitability before installation!

- » Minimum roof pitch 10°, as per ZVDH ; ZVDH specifications regarding the sub-roof must be observed.
- » To ensure water sealing, the roof tiles need to be dry and free from dirt during installation.
- » **The tile should not be longer than the Beta-Plate (check dimension a).**
- » **Tiles with interlocking pyramids on the bottom and extreme bead differences/waviness are not compatible**
- » **Avoid the formation of water pockets, which would hinder proper water drainage**
- » **Attachment lugs of overlying roof tiles may need to be removed.**
- » Beta-Plates must not be installed **directly** on top of each other.
- » The Beta-Plate is not a substitute for a verge tile; it must be moved inwards by one tile, possibly with the help of the rafter spanning profile.
- » Special approval upon request
- » For questions about tiles, contact sales@sl-rack.com

Accessories

» **Roof hook 3D SL Alu**

- Three-dimensional adjustability
- Suitable for all common tile roofs / snow load zones
- Optimal adaptability to the roof: no shims necessary
 - Vertical adjustability of the foot
=> Attaching the roof hook at the optimum height
 - Horizontal flexibility of the base plate
=> Optimal positioning of the bracket when exiting the tiles
 - Vertical flexibility of the pre-installed Clamp Combination
=> Optimal height positioning of the rail
- Only one tool required: Torx 40
- Fast hook-in technology for rails
- Flexible installation: Single- or cross-railed systems



VARIANTS

Item no. 11145-01	EAN 4262355112555	Roof Hook 3D SL Alu K	10 pcs. per PU
Item no. 11100-01	EAN 4262355112562	Roof Hook 3D SL Alu L	10 pcs. per PU
Item no. 11100-02	EAN 4262355112609	Roof Hook 3D SL Alu XL	10 pcs. per PU

» **Roof hook SL A2**

- Economical and reliable all-rounder
- Suitable for all common tile roofs / snow load zones
- Shims 2 or 5 mm
=> Optimal adaptability to the roof
- Only one tool required: Torx 40
- Fast hook-in technology for rail attachment
 - Pre-installed Clamp Combination
=> Height adjustability of the rail
- Flexible installation: Single- or cross-railed systems



VARIANTS

Item no. 13135-01	EAN 4262355110926	Roof Hook SL A2-35	20 pcs. per PU
Item no. 13145-01	EAN 4262355110933	Roof Hook SL A2-45	20 pcs. per PU
Item no. 13145-02	EAN 4262355110940	Roof Hook SL A2-45 X	10 pcs. per PU
Item no. 13145-03	EAN 4262355112036	Roof Hook SL A2-45 L (long)	10 pcs. per PU
Item no. 13155-01	EAN 4262355111923	Roof Hook SL A2-55	10 pcs. per PU

Installation



Make sure the installation area is clean, dust-free and dry!



1 Remove the tiles in the installation area (max. 3 tiles). Position the remaining tiles...



2 ...under the top row, so that the cross battening is easily visible and accessible.



3 Determine the height of the tile (HT) to be compensated for.



4 Adjust the height of the Beta-Plate by folding the support plate on the back.



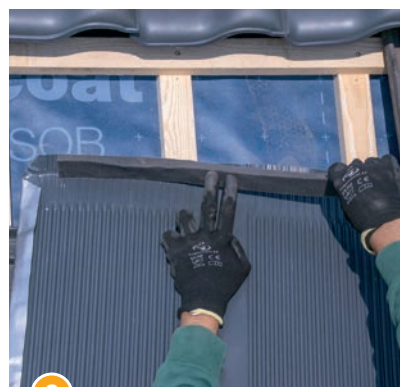
5 Height of tile (HT) = height of support plate (HS).



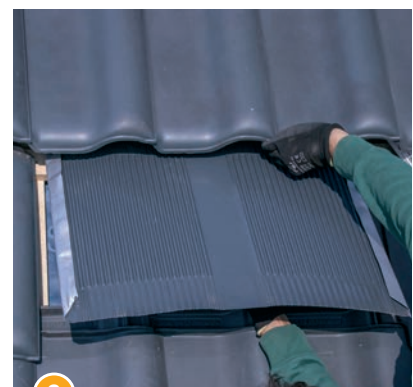
6 Bend the rear edge slightly backwards.



7 Peel off the cover of the adhesive tape from the back of the foam wedge.



8 Attach the foam wedge to the inside of the rear edge of the Beta-Plate.



9 Position the opening of the support plate on the upper batten.

Installation



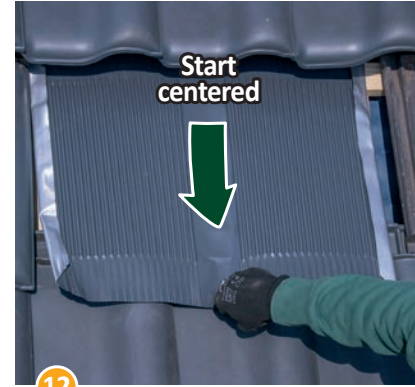
Make sure the installation area is clean, dust-free and dry!



10
Press down on the bottom edge to roughly form-fit the Beta-Plate to the tiles.



11
Completely peel off the cover of the adhesive tape from the back of the Beta-Plate.



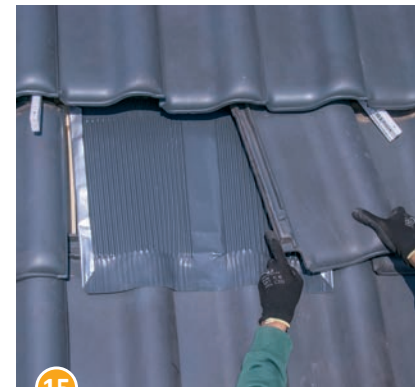
12
Starting from the center and working outwards, press down the Beta-Plate firmly and ensure it is form-fitting the tile below.



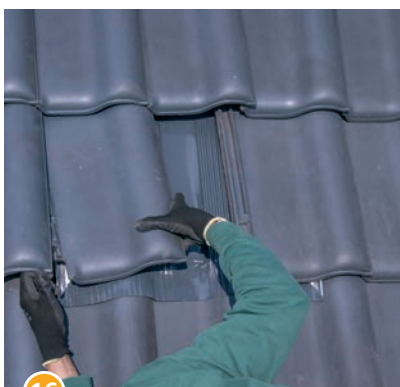
13
Make sure no water pockets can form in the upper and center part.



14
Remove the locking lugs from the back of the tiles that need to be put back in place.



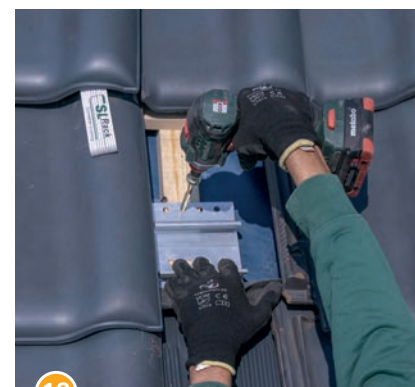
15
Put surrounding tiles...



16
...back in place.



17
Remove the tiles above the Beta-Plate.



18
Align the base plate of the roof hook on the rafter.

Installation



Make sure the installation area is clean, dust-free and dry!



19
Fasten the base plate to the rafter with a minimum of 2 wood screws (at least 1 screw per horizontal row of holes) with a tightening torque of 10 Nm.



20
Cut the foam wedge at the position of the roof hook with an L-cut.



21
Insert the roof hook into the base plate.



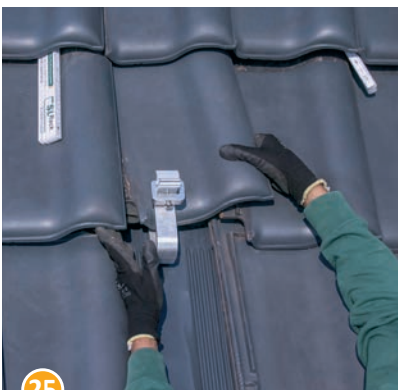
22
Place the cut of the foam wedge...



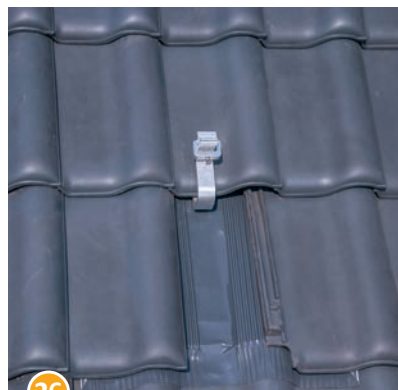
23
...around the roof hook.



24
Fixate the position of the roof hook by tightening the bolt (6 Nm).



25
Put surrounding tiles...



26
...back in place.



Technical Data

Material	Rolled sheet aluminium, rubber collar in EPDM and galvanised steel (support plate)
Design Tool	SL-Rack-Configurator Solar.Pro.Tool .
Statik	The statics calculation takes place as per the current country-specific standards (EN 1991, EC1 for Germany). Depending on snow or wind loads or for large modules, it may be necessary to use more than the standard 4 attachment points. Please make sure to comply with the instructions of the module manufacturer contained in the installation manual. We do not assess the load-bearing capacity of the roof.

Your opinion is important to us!

We want to make your everyday work easier.
Your praise, criticism and suggestions for improvement help
us to do this. We look forward to your feedback.



SL Rack **Feedback**
[Provide Feedback >](#)



SL Rack **Website**
[Check it out >](#)



SL Rack **YouTube**
[Watch videos >](#)

Find us on



Subject to technical changes
and misprints.
Version 07/2024 V5