



### Your advantages with our products

- » Direct mounting into the SL Rack RAIL.
- » Available in brick red (RAL 8004) and anthracite (RAL 7016).
- » No additional snow guard required.
- » Increase of usable module area.
- » Variable length with cut-to-size tube.
- » Can be designed in the **Solar.Pro.Tool**
- » **Dimensions:** Length 3,000 mm, width 370 mm, height 220 mm.
- » **Material:** Aluminum (powder-coated), stainless steel, nylon.



EN 1090-1  
Werkseigene  
Produktions-  
kontrolle  
  
www.tuv.com  
ID 9000000000

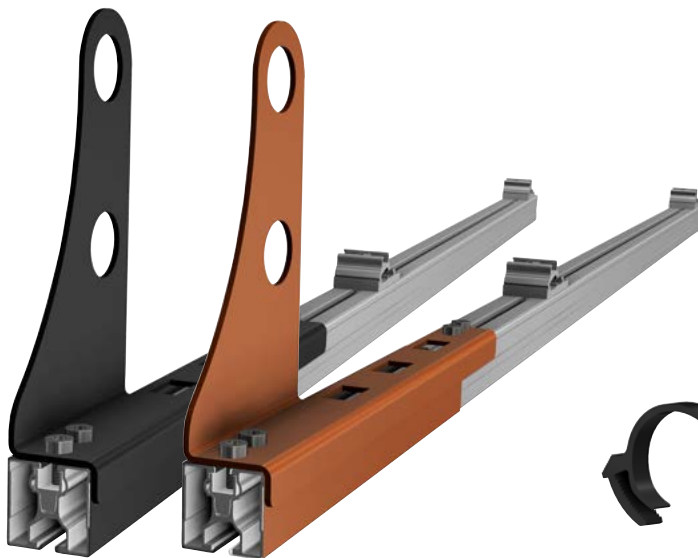


\*Our warranty conditions apply. They can be viewed online at [www.sl-rack.com](http://www.sl-rack.com)

In addition to the PV system, the following components are required for a 3-meter-long SL Rack snow guard. To extend the snow guard, replace two end caps with a connector (*item no. 91771-03*).

The snow guard kit consists of a snow guard bracket, a 2400 mm long piece of RAIL 40 and two Cross Connectors. Optionally add rail covers.

## Components



**4x Snow Guard Kit**  
*Item no. 91770-01 (brick red)*  
*Item no. 91770-02 (anthracite)*



**4x Mounting Clip**  
*Item no. 91771-05*



**2x Snow Guard Tube**  
*Item no. 91771-01 (brick red)*  
*Item no. 91771-02 (anthracite)*



**4x End Caps**  
*Item no. 91771-04*

## Accessories

**Custom colours:** Our six basic components (RAILs, 3D SL Alu roof hooks, mid and end clamps Vario, Internal Connector RAIL 2.0 and RAIL Covers) are also available in custom colours to visually adapt the racking in accordance with legal requirements (e.g. Heritage Protection), if an overall uniform appearance of the PV system and the racking is intended.



**Tube Connector**  
*Item no. 91771-03*



**RAIL Cover**  
*Item no. 97740-00*



**Plastic End Cap RAIL 40**  
**Custom colour**  
*Item no. 97460-00*

For ease of reading, the generic masculine form is used throughout this product sheet. Unless otherwise stated, personal designations refer to all genders.



## Installation

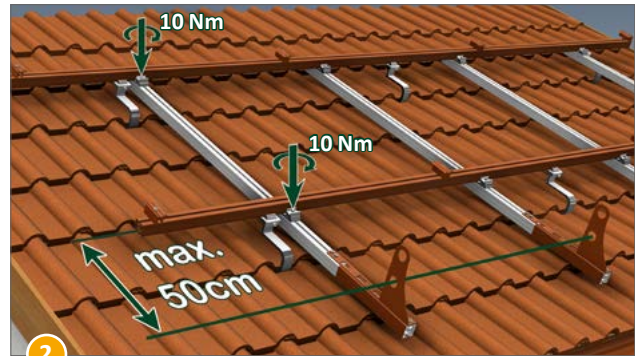


**Note:** For precise specifications on the installation and design of snow guards, please refer to the ZDVH (German Central Association of the Roofing Trade) or the state building regulations applicable to your location. The distance between the snow guard tubes and the last attachment point on the roof **must not exceed 50 cm**. The snow guard bracket must not extend beyond the roof's edge.



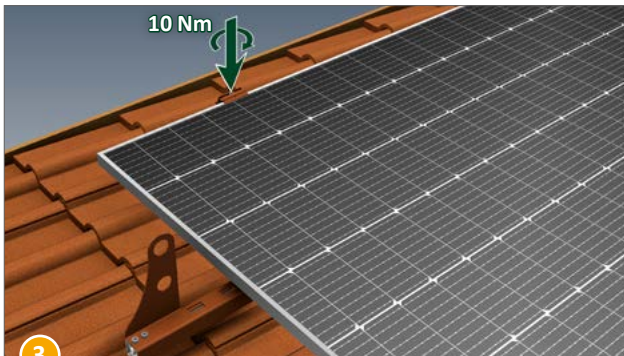
1 From the bottom, slide the snow guard (item no. 91770) into the RAIL.

**Attention:** The distance between the snow guard tubes and the last attachment point on the roof **must not exceed 50 cm**.

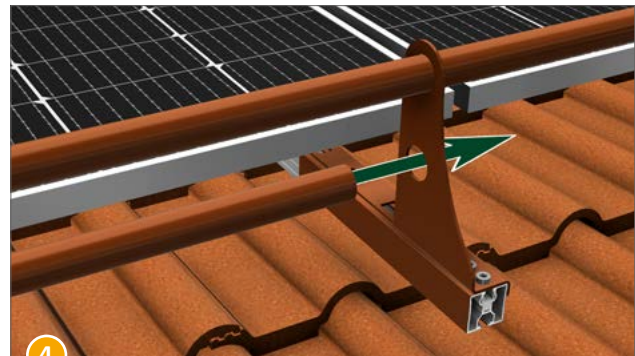


2 Secure the Cross Connectors with a tightening torque of 10 Nm.

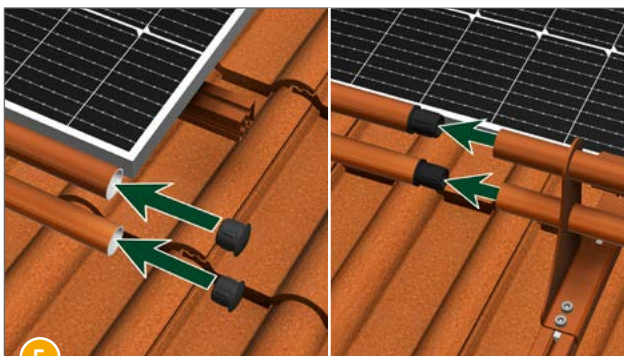
Please note that the protrusion should be no more than flush with the edge of the roof.



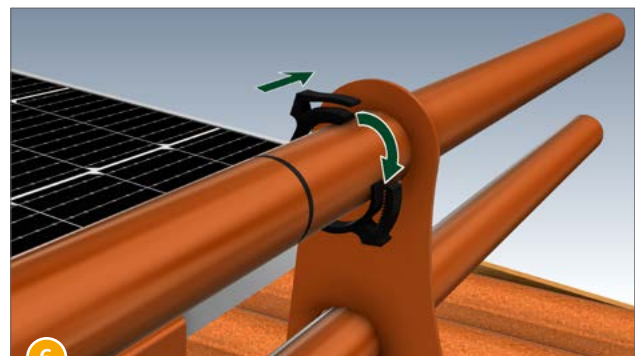
3 Fixate the module with an end clamp (10 Nm).



4 Slide the snow guard tubes into the recesses of the snow guard bracket.



5 Press the end caps into the snow guard tubes. To connect several snow guard tubes, replace the end caps with tube connectors (item no. 91771-03).



6 Secure the snow guard tubes with mounting clips, as illustrated.



## Technical Data

<b>Material</b>	Aluminum (powder-coated), stainless steel, nylon
<b>Design Tool</b>	SL-Rack-Configurator <b>Solar.Pro.Tool</b>
<b>Statics</b>	The structural analysis is carried out in accordance with the current country-specific standards (EN 1991, EC1 for Germany). Depending on snow loads, wind loads, or when utilizing large modules, it may be necessary to use more than the usual 4 fastening points. Make sure to observe the installation manual of the respective module manufacturer. The load-bearing capacity of the roof has not been evaluated by SL Rack.

SL Rack  
[Website](#)



SL Rack  
[YouTube](#)



SL Rack  
[Online-ordering  
system](#)



Contact us  
for an offer:

**SL Rack GmbH**  
Münchener Straße 1  
D-83527 Haag i. OB  
Email: [sales@sl-rack.com](mailto:sales@sl-rack.com)  
Phone: +49 8072 3767-0  
[www.sl-rack.com](http://www.sl-rack.com)

Subject to technical  
changes and misprints.  
Version 07/2025 V01