



Item no. 11117-00

Your advantages with our products

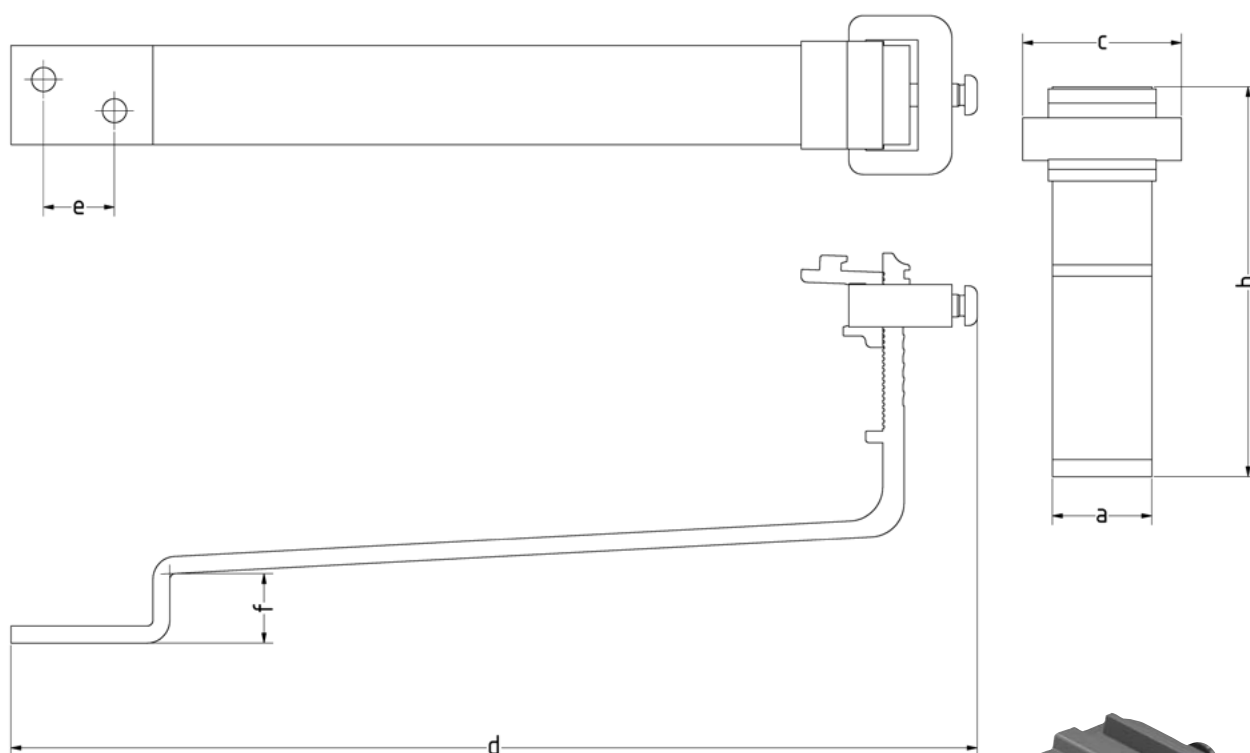
- » Specially designed for slate and beavertail roofs.
- » The low height ensures a harmonious integration into the roof scape, providing a sleek look.
- » Clamp Combination fits into lower rail channel of any RAIL.
- » Secure attachment to sensitive roof materials.
- » Lightweight, corrosion-resistant aluminum.
- » **Dimensions:** Length 348 mm, height 137 mm, width 35 mm
- » **Material:** Aluminum
- » Weight: 0,357 kg



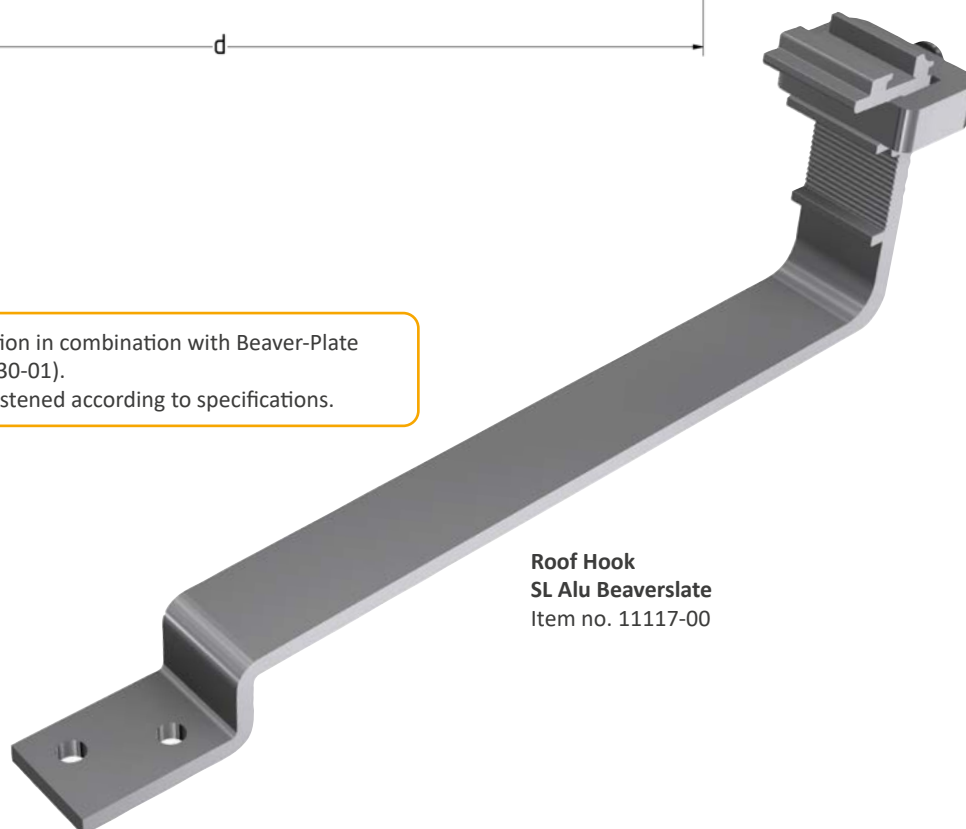
*Our warranty conditions apply. They are available at www.sl-rack.com

Dimensions

	a	b	c	d	e	f
Roof Hook SL Alu Beaverslate	35 mm	137 mm	56 mm	348 mm	25 mm	24 mm

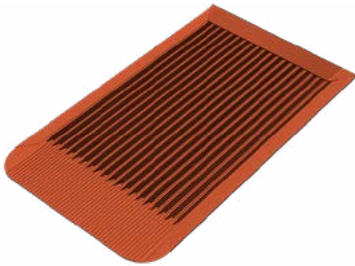


We recommend installation in combination with Beaver-Plate (item no. 11530-00, 11530-01).
Roof tile clips must be fastened according to specifications.

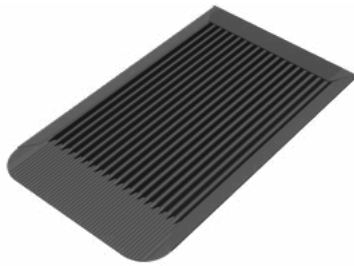


**Roof Hook
SL Alu Beaverslate**
Item no. 11117-00

Accessories

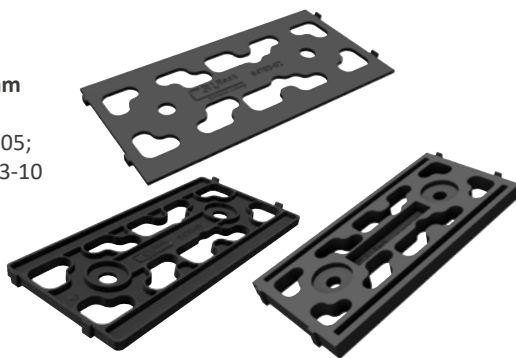


Beaver-Plate
Colour: Brick red RAL 8004
Item no. 11530-00

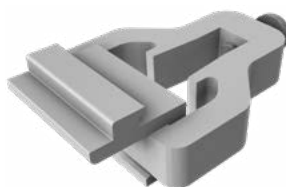
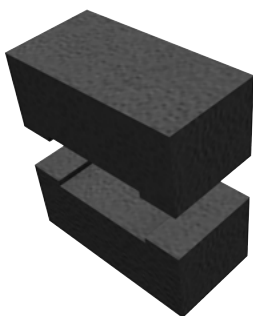


Beaver-Plate
Colour: Anthracite RAL 7016
Item no. 11530-01

(Flex-) Shims
for Roof Hooks 150 x 60 mm
(2 mm / 5 mm / 10 mm)
Item no. 97401-02; 94702-05;
94703-02; 94703-05; 94703-10



Roof Hook Sealing
Item no. 97402-00



Vertical Clamp Combination
Item no. 11105-05



Mid clamp
Item no. 91161-01



Mid clamp, black anodized
Item no. 96161-01



Mid clamp with grounding pin
Item no. 91160-01



Mid clamp with grounding pin, black anodized
Item no. 96160-01



End clamp
Item no. 91163-01



End clamp, black anodized
Item no. 96163-01



End clamp with grounding pin
Item no. 91162-01



End clamp with grounding pin, black anodized
Item no. 96162-01

Connection components:

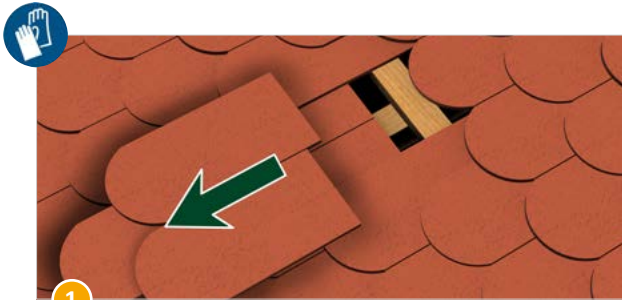
2x Flange head screws
(Item no. 92109-10/12/28)*



* The length of the screw depends on the roof structure. Before selecting the screw, measure the height of the roof structure to ensure that the screw is inserted into the rafter at least 40 mm.

For ease of reading, the generic masculine form is used throughout this product sheet. Unless otherwise stated, personal designations used in this document refer to all genders.

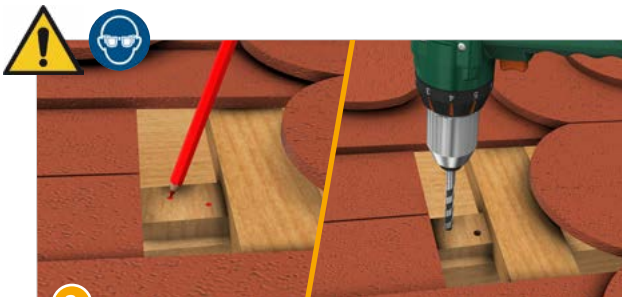
Installation



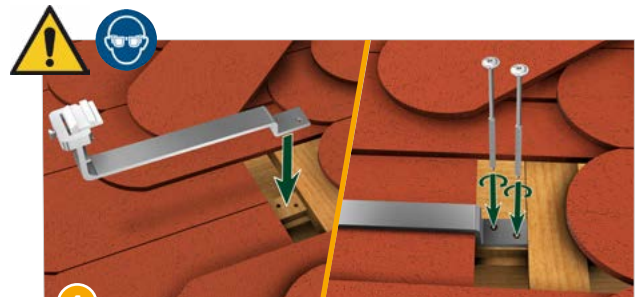
1
Remove the tiles at the rafters.



2
Place a shim or wooden wedge on the sub-structure to compensate for the height difference.



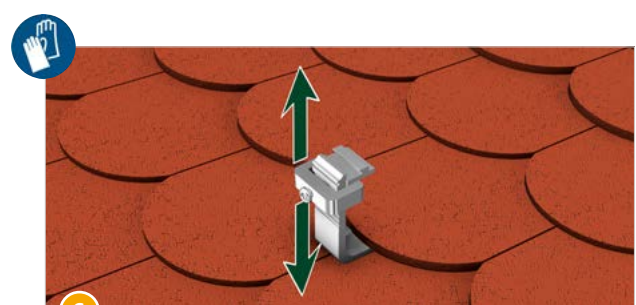
3
Use a wood drill for pilot holes.



4
Secure the hook with the optionally available flange head screws (item no. 92109-10/12/28). Note: Choose the screw length according to the data sheet "Flange Head Screws".



5
Re-lay the roof tiles.



6
The Clamp Combination has an adjustment range of 25 mm and is only fixated once the RAIL is attached.

This image shows a single sheet of white paper with horizontal ruling lines. The lines are evenly spaced and run across the width of the page. There are no margins, text, or other markings on the paper.

Additional Information

- Disassemble in reverse order, observing all applicable safety regulations.
- For information on disposal and recycling, visit www.sl-rack.co.uk.

Technical Data

Material Aluminum

Design Tool SL-Rack Configurator **Solar.Pro.Tool**

Statics The structural analysis is carried out in accordance with the current country-specific standards (EN 1991, EC1 for Germany). Depending on snow loads, wind loads, or when utilizing large modules, it may be necessary to use more than the usual 4 fastening points. Make sure to observe the installation manual of the respective module manufacturer. The load-bearing capacity of the roof has not been evaluated by SL Rack.

SL Rack
[YouTube](#)



SL Rack
[Website](#)



SL Rack
[Online-ordering
system](#)



Contact us
for an offer:

SL Rack GmbH
Münchener Straße 1
D-83527 Haag i. OB
Email: sales@sl-rack.com
Phone: +49 8072 3767-0
www.sl-rack.com

Subject to technical changes
and misprints.
Version 07/2025 V02