



### Your advantages with our products

- » Suitable for installation on green roofs, substrate and gravel roofs.
- » Plasticizer-free Base Plate Gravel can even be installed when having contact with the roof membrane.
- » Its optimized geometry compensates for unevenness in the substrate and gravel roofs.
- » Integrated ballasting with concrete blocks for green roofs.



EN 1090-1  
Factory  
Production  
Control

www.tuv.com  
ID 9000039073



\*Our warranty conditions apply. They are available at [www.sl-rack.com](http://www.sl-rack.com)

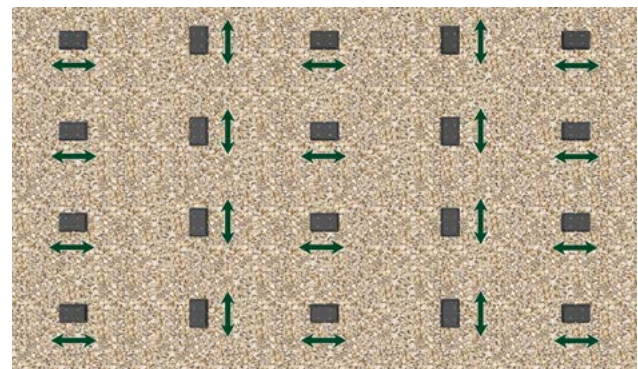


For ease of reading, the generic masculine form is used throughout this product sheet. Unless otherwise stated, personal designations used in this document refer to all genders.

## Installation on roofs with substrate & gravel



**Note:** Install the SL Fast Flat with the Base Plate as usual. Please check the SL Fast Flat installation manual for more details.



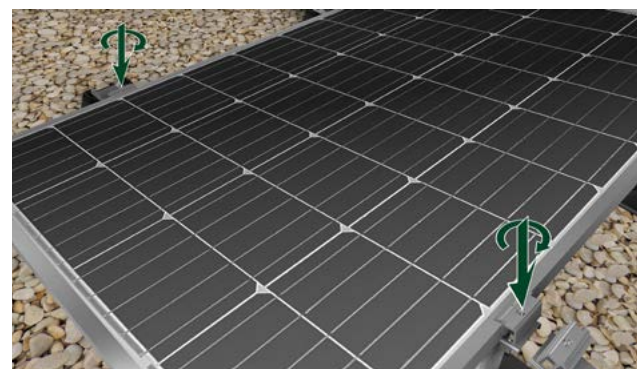
1. Lay out the Fast Flat Basic Frames as usual. Gently embed the SL Rack Base Plate Gravel (item no. 22300-85) into the correct position in the gravel or substrate.

**Note:** The Base Plate should protrude approx. 25 mm above the surface.

2. For additional stability, every second Base Plate should be rotated by 90 degrees.

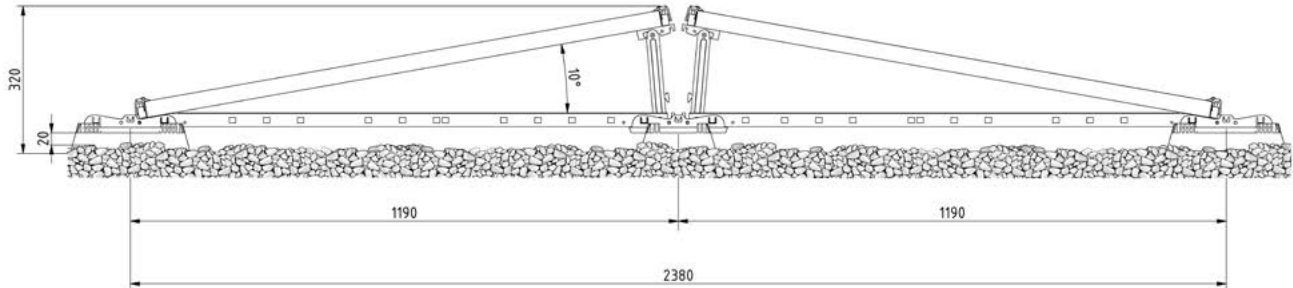


3. Place the SL Fast Flat Base Plate into the corresponding opening of the Base Plate Gravel.



4. Install the modules as usual.

## Dimensions



## Accessories



**Base Plate Gravel**  
Item no. 22300-85



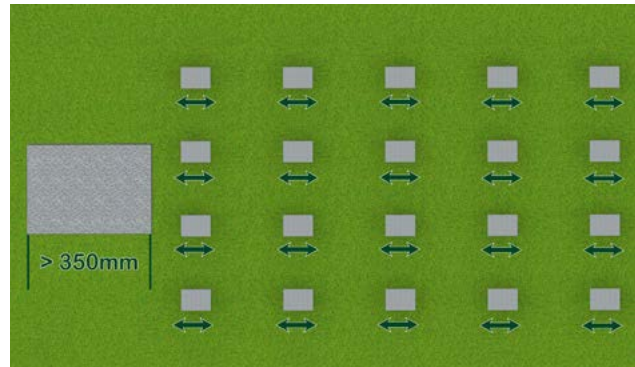
## Installation on green roofs



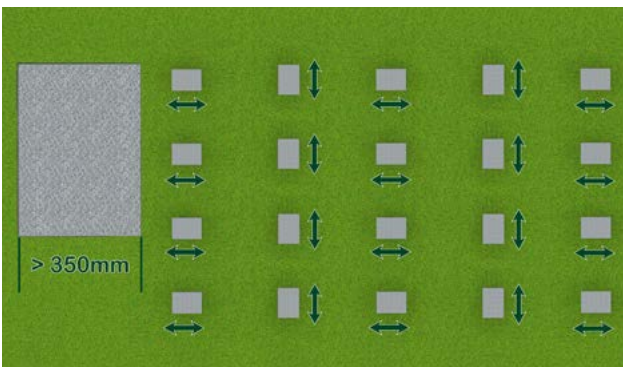
**Note:** The green roof solution is installed on standard concrete blocks. Special concrete screws are required.



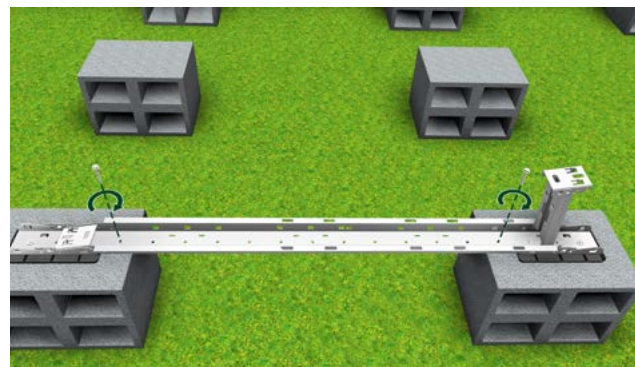
1. Place the hollow core blocks in the position of the Fast Flat Base Plates, according to the information from the design software.



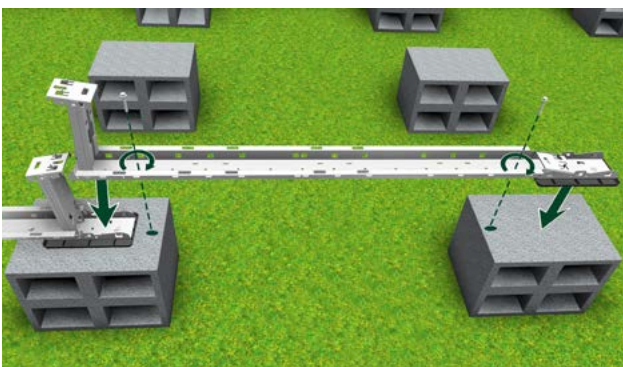
2. Align the hollow core blocks with a spirit level.



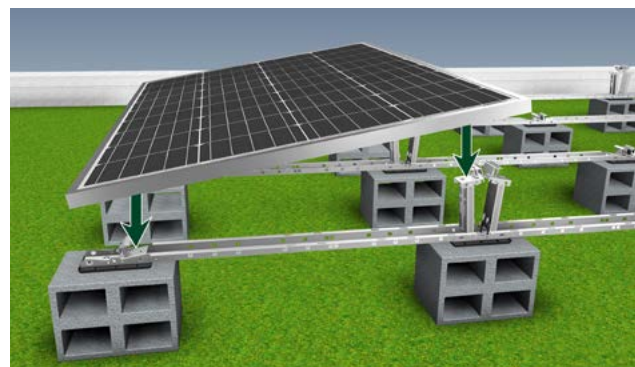
3. For additional stability, every second block should be rotated by 90 degrees.



4. Place the rows of Basic Frames onto the hollow core blocks and fixate them ...

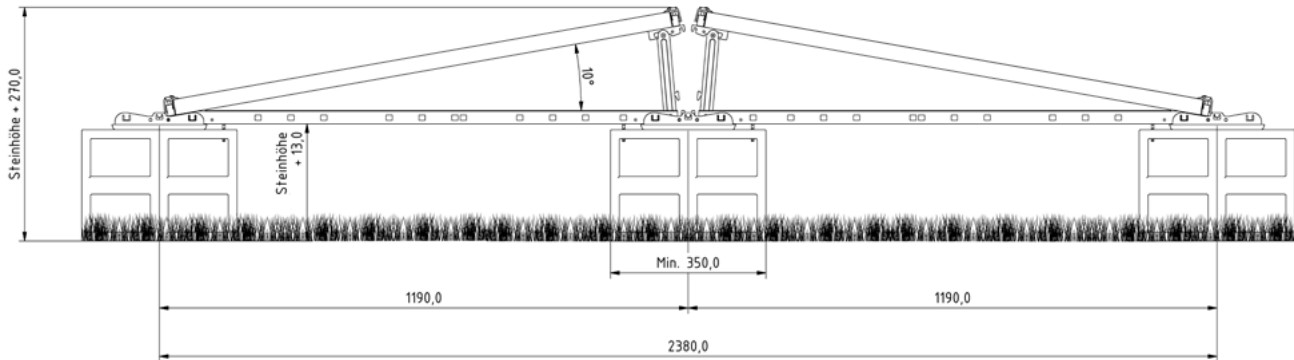


5. ... at the indicated holes of the Basic Frames.



6. Install the SL Fast Flat and modules as usual.

## Dimensions



## Additionally required parts

- Concrete screw 6 x 35, e.g. Hilti HUS4-HR
- Standard hollow core concrete blocks



## Technical Data

**Material** HPDE plastic

**Design Tool** SL-Rack-Configurator **Solar.Pro.Tool**

**Statics** The structural analysis is carried out in accordance with the current country-specific standards (EN 1991, EC1 for Germany). Depending on snow loads, wind loads, or when utilizing large modules, it may be necessary to use more than the usual 4 fastening points. Make sure to observe the installation manual of the respective module manufacturer. The load-bearing capacity of the roof has not been evaluated by SL Rack.

SL Rack  
[Website](#)



SL Rack  
[YouTube](#)



SL Rack  
[Online-ordering  
system](#)



Contact us  
for an offer:

**SL Rack GmbH**  
Münchener Straße 1  
D-83527 Haag i. OB  
Email: [sales@sl-rack.com](mailto:sales@sl-rack.com)  
Phone: +49 8072 3767-0  
[www.sl-rack.com](http://www.sl-rack.com)

Subject to technical changes  
and misprints.  
Version 08/2025 V01